



European Committee for Standardization
Comité Européen de Normalisation
Europäisches Komitee für Normung

CEN/WS/BII32

Simple Ordering

PROFILE

DRAFT

Business Domain: Post award procurement

Business Process: Simple Ordering

Document Identification: CEN/WS/BII2/Profile BII032

Version: 2.0

Release: 2012-06-27

Date of approval:

Document Summary

This profile describes a process comprising a Buyer to issue an electronic order, whereby the Seller may accept the order in full, or reject it. In his rejection the Seller may indicate reasons, so the Buyer may issue a new order that may be acceptable. The order that is agreed upon by acceptance has the commercial and legal status of a contract.

Editors

- Oriol Bausà Peris
- Georg Birgisson
- Fred van Blommestein
- Arofan Gregory
- Anders Kingstedt

Contributors

CEN/ISSS WS/BII2 Post Award Working group:

- Bergthor Skulason (chair)
- Antonia Caressa, Consip S.p.A., IT
- Arianna Brutti, Enea, IT
- Bao Nguyen, Difi, NO
- Douglas Hill, GS1, DK
- Flemming Moller Hansen, Evenex, DK
- Jan Bo Sørensen, Evenex, DK
- Jan Mærøe, DIFI, NO
- Jaroslav Flejberk, GS1, CZ
- Joao Frade, PWC/EC, EU
- Jostein Frømyr, EDISYS, NO
- Klaus Vilstrup Pedersen, Difi, NO
- Martin Forsberg, SFTI, SE
- Michael Dill, Gefeg, DE
- Nicoletta Lippi, Consip S.p.A., IT
- Peter Borresen, ebConnect, DK
- Sören Lennartsson, SFTI, SE
- Sven Rasmussen, NITA, DK
- Veit Jahns, University of Duisburg-Essen, DE

Table of Contents

| | | |
|---------|---|----|
| 1 | Introduction..... | 4 |
| 1.1 | CEN WS/BII2 profiles | 4 |
| 1.2 | CEN WS/BII2 Post award support..... | 5 |
| 1.3 | Implementation, conformance and customization..... | 6 |
| 2 | Business environment..... | 8 |
| 2.1 | Introduction..... | 8 |
| 2.2 | Objectives..... | 8 |
| 2.3 | Scope | 8 |
| 3 | Requirements..... | 10 |
| 3.1 | Ordering process requirements..... | 10 |
| 3.1.1 | Process business requirements | 10 |
| 3.1.2 | Support of common business processes | 10 |
| 3.2 | Ordering information requirements | 11 |
| 3.2.1 | Order Submission transaction business requirements | 11 |
| 3.2.2 | Simple Order Response transaction business requirements..... | 12 |
| 4 | Profile detailed description | 14 |
| 4.1 | Business processes in scope..... | 14 |
| 4.2 | Roles involved | 14 |
| 4.3 | Simple Ordering Business Process..... | 15 |
| 4.4 | Transaction Information requirements | 17 |
| 4.4.1 | Order Submission Transaction..... | 17 |
| 4.4.1.1 | Order Submission Transaction Information Requirements Model | 18 |
| 4.4.2 | Order Response simple Transaction..... | 31 |
| 5 | Implementation..... | 34 |
| 6 | References | 35 |
| 6.1 | General references relevant for all BII profiles..... | 35 |

1 Introduction

This profile is a deliverable of the CEN ISSS BII2 workshop.

The original CEN Workshop on **Business Interoperability Interfaces for public procurement in Europe** (CEN ISSS BII) was concluded in December 2009, and its results, including a set of profiles, were issued as **CWA 16073:2010**. The objective of the second phase of the workshop – CEN WS/BII2 – was to provide a framework for interoperability in pan-European electronic procurement transactions, expressed as a set of requirements and technical specifications. The requirements are input into UN/CEFACT and the specifications are compatible with UN/CEFACT in order to ensure global interoperability.

Based on user input the CEN WS/BII2 has issued a number of new profiles and reviewed and updated a number of the profiles published as part of CWA 16073:2010. One of the new profiles is profile BII28 that describes a simple ordering process.

1.1 CEN WS/BII2 profiles

A CEN WS/BII2 profile description is a technical specification describing

- the choreography of the business process covered, i.e. a detailed description of the way the business partners collaborate to play their respective roles and share responsibilities to achieve mutually agreed goals with the support of their respective information systems,
- the electronic business transactions exchanged as part of the business process, with their information requirements, and the sequence in which these transactions are exchanged,
- the business rules governing the execution of that business process, as well as any constraints on information elements used in the transaction data models

The profiles focus on the standardization on the organisational and semantics interoperability levels rather than on syntax or technical interoperability levels. Consequently the business transactions within a profile can be structured based on different message standards/syntax as long it can carry all the necessary information elements.

Although the profile descriptions and transaction data models provided by CEN WS/BII2 are neutral of syntax, the workshop also published specifications of how its data models may be mapped to defined syntaxes. This is done in order provide implementable specifications.

The main focus of the profile description and the associated transaction data models is to address generally expressed business requirements, applicable throughout the European market. Although the profile description is designed to meet generally expressed requirements, it is still the responsibility of the users to ensure that the actual business transactions exchanges meets all the legal, fiscal and commercial requirements relevant to their business.

BII profiles describe common business processes. Stating what business practices are “common” depends on regions and industries that may have their own practices and needs, as well as on work practices within individual companies. Describing what business processes are “common” is therefore a qualitative process. This section sets out to identify what business practices can be listed as “common” and should therefore be supported by the profile. The benchmark is that the common business process is a process that is used by a wide range of companies in different industries and regions or is generally recognized as being relevant for most companies. The method for collecting is through input and expert advice from workshop participants, through existing documentation and expert review.

Each document acts as carrier of information between a seller and a buyer. Some of this information is directly related to its core function but additionally and frequently contains information that is used for related business processes. The nature of which and details depend on the industry and bilateral business relations.

In BII profiles, requirements of the information content of the documents are related to the business process in which the documents are exchanged. The business process in scope of the profile is identified in section 2. In section 3, the business requirements, taken into account, are listed, both on process level and on document/transaction level. In section 4, these requirements are modelled into UML activity diagrams and

into Transaction Information Requirement models. Additional Transaction Business Rules are included in section 4 as well.

The requirement models are syntax neutral. The mapping of the models to available syntaxes is outside the scope of the profiles, but is referenced to in section 5.

1.2 CEN WS/BII2 Post award support

The BII workshop has developed a set of profiles to support interoperability in the pre and post award areas. The scope of BII2 is public procurement but the profiles apply as well to private trade since most public trade involves private suppliers.

The scope of BII2 post award profiles include processes that support communication of catalogues, orders and invoices. These may link with other support processes like transport, inventory and payment, but these other processes are currently out of scope for the workshop.

The set of BII profiles for supporting the post award area are:

| Profile | Processes | Transactions | Version |
|-----------------------------------|----------------------|--|-------------|
| BII33 Catalogue subscription | Sourcing | Catalogue Subscription Request Catalogue Subscription Request Acceptance Catalogue Subscription Request Rejection | BII2 |
| BII01 Catalogue only | Sourcing | Submit Catalogue Accept Catalogue Reject Catalogue | BII2 |
| BII17 Multi Party Catalogue | Sourcing | Catalogue Request Catalogue Request Rejection Multiparty Catalogue | BII2 |
| BII02 Catalogue update | Sourcing | Submit Catalogue Item Update Submit Catalogue Price Update Accept Catalogue Update Reject Catalogue Update | BII2 |
| BII16 Catalogue Deletion | Sourcing | Catalogue Deletion Request Catalogue Deletion Confirmation | BII2 |
| BII18 Punch Out | Ordering | Provide Quote | BII1 |
| BII20 Customer Initiated Sourcing | Sourcing | Request Quote Provide Quote Reject Quote | BII1 |
| BII03 Order only | Ordering | Order Submission | BII2 |
| BII32 Simple ordering | Ordering | Order Submission Simple Order Response | BII2 |
| BII28 Ordering | Ordering | Order Submission Order Response | BII2 |
| BII27 Advanced ordering | Ordering | Order Submission Order Acceptance Order Rejection Seller Counter Offer Buyer Counter Offer Counter Offer Acceptance Order Withdrawal | BII2 |
| BII04 Invoice Only | Billing | Invoice | BII2 |
| BII15 Scanned invoice | Billing | Submit Invoice Correct with Credit Request Rescan | BII1 |
| BII09 Customs Bill | Billing | Submit Invoice Correct with Debit Correct with Credit | BII1 |
| BII05 Billing | Billing | Invoice Credit Note Corrective Invoice | BII2 |
| BII23 Invoice only with dispute | Billing | Submit Invoice Dispute Invoice | BII1 |
| BII06 Procurement | Ordering, Billing | Order Submission Order Acceptance Order Rejection Invoice Credit Note Corrective Invoice | BII2 |

| Profile | | Processes | Transactions | Version |
|---------|------------------------------------|---|---|---------|
| BII07 | Procurement with invoice dispute | Ordering, Billing | Submit Order Accept Order Reject Order Submit invoice Dispute Invoice Correct with Invoice Correct with Credit | BII1 |
| BII31 | Reminder only | Payment | Payment Reminder | BII2 |
| BII21 | Statement | Payment | Statement Statement Rejection | BII2 |
| BII08 | Billing with dispute and reminder | Billing, Payment | Submit Invoice Dispute Invoice Correct with Invoice Correct with Credit Issue Reminder | BII1 |
| BII19 | Advanced Procurement | Ordering, Billing, Payment | Submit Order Accept Order Reject Order Submit Counter Offer Accept Counter Offer Reject Counter Offer Submit invoice Dispute Invoice Correct with Invoice Correct with Credit Issue Reminder | BII1 |
| BII30 | Despatch only | Fulfilment | Despatch Advice | BII2 |
| BII29 | Utility statement | Fulfilment | Utility Statement Utility Statement Acceptance Utility Statement Rejection | BII2 |
| BII13 | Advanced Procurement with Dispatch | Ordering, Fulfilment, Billing, Payment | Submit Order Accept Order Reject Order Submit Counter Offer Accept Counter Offer Reject Counter Offer Provide Despatch Advice Submit invoice Dispute Invoice Correct with Invoice Correct with Credit Issue Reminder | BII1 |

This profile, BII32 Simple Ordering is to be used in environments where orders are to be responded to by a Supplier. The Supplier may accept the order as is, or reject it. If the Seller needs to be able to (slightly) change the order, profile BII28 is to be used. In environments where order responding is not needed, profile BII03 Order Only is to be implemented. If orders may be countered by the Supplier pending acceptance by the Buyer, BII27 Advanced Ordering applies.

If ordering, invoicing and/or fulfilment are to be combined in one process, other profiles may be used as listed in the table above.

1.3 Implementation, conformance and customization

CEN WS/BII2 profiles define the core functionality that is required in order to achieve interoperability for the business processes that are covered. Parties, claiming conformance to a CEN WS/BII2 profile must be capable of:

- Processing all non-optional transactions that are defined in the profile
- Sending all mandatory elements within the transactions
- Processing all elements within the transactions they receive

Parties may agree bilaterally or within certain communities to extend the core set of information elements, or to adapt their cardinality. This extension mechanism is described in the BII Technical Guideline: BII conformance and customization.

In order to implement the profile, the transactions are to be represented in some syntax. Syntax representation is outside the scope of this profile, however, the mapping of the profile transactions to UBL 2.0 and to UN/CEFACT is described in section 5 of this profile. In section 5, reference is made to technical documents such as XML schemas, Schematron files and example messages to support technical implementation.

Implementations of this profile may be validated by means of tools and supporting material, as described in the BII Technical Guideline: BII implementation and use of validation artifacts. More background information and support material can be found on the CEN WS/BII2 website <http://www.cenbii.eu/>.

2 Business environment

2.1 Introduction

The BII32 – Simple Ordering profile allows a Buyer to place an order with a Seller, who then may accept or reject the order in full. No partial accept or reject is supported in this profile. Fulfilment of the order is outside the scope of this profile. The profile describes a series of activities that govern communication between the parties, data and rules that apply.

BII supports ordering with different responses as follows:

- BII3 – Order Only. With no response.
- BII6 – Procurement.
 - Order + With Yes/No response on header. (combined with billing)
- BII27 – Advanced ordering.
 - With line level response supplier can modify partially (buyers response is needed).
- BII28 – Ordering.
 - With line level response, supplier can modify partially (no buyer feedback)
- BII32 – Simple Ordering.
 - With Yes/No response on header.

Implementation:

- BII6, BII32: simple response message used
- BII27, BII28, full response message used

2.2 Objectives

The business objectives for implementing this profile are:

1. The profile is a basis for an EDI agreement between the parties and enables trading partners to communicate without a previous bi-lateral setup or agreements.
2. The profile is a basis for automated handing of orders in a semi manual environment.
3. The profile enables customers to set up a standardized acquisition process.
4. SME can offer their trading partners the option of exchanging standardized documents in a uniform way and thereby move all orders into electronic form.
5. The profile can be used as basis for restructuring of in-house processes of ordering.
6. Significant saving can be realized by the procuring agency by automating and streamlining in-house processing.
7. Significant saving can be realized by the suppliers by automating and streamlining in-house processing: approval, picking and invoicing can be improved significantly based on increased order quality.

2.3 Scope

This profile supports a process of ordering. It is intended to support transmission of electronic documents for processing in semi-automated processes by the receiver. The intended scope for this profile includes:

- B2B and B2G
- Common business processes for cross industry and cross border ordering
- Regional procurement within EU and EEA. The profile is expected to be applicable to other regions following a review of regional requirements.

- Mainly for purchase of goods and services and/or services that can be itemized.

The transactions, specified in this profile are intended to be exchanged between the application systems of customers and suppliers. This means that it is expected that customers and suppliers have connected their systems to the internet, and that they have middleware in place to enable them to send and receive the transactions in a secure way, using an agreed syntax.

3 Requirements

3.1 Ordering process requirements

The Ordering process includes the sending of Orders from a Buyer to a Seller and the response of the Seller. This profile supports a set of “common business process” that are used widely or understood as being relevant for most companies.

The Ordering process flow can be described as follows:

- A Buyer submits an Order for delivery of goods or services to a seller.
- An Order may refer to a framework agreement for its terms and conditions; otherwise the Customer terms and conditions apply.
- An Order may contain items (goods or services) with item identifiers or items with free text description.
- The Seller may accept the Order, committing himself to the conditions stated therein by means of an Order Response transaction.
- Alternatively, the Seller may reject the Order by means of the Order Response transaction
- An order rejection may contain reasons for rejection.
- The process ends with the receipt of an Order Response by the Buyer. If the order was accepted, a contract is concluded. If the order was rejected, no contract and no residual obligations exist.
- After receipt of an Order Response that rejects the order, the Buyer may start a new Simple ordering process, taking into account the reasons for rejection of the Seller.

3.1.1 Process business requirements

| ID | Requirement |
|-----------|--|
| Pbr28-001 | A Seller may either: <ul style="list-style-type: none"> ➤ Accept the Order in full ➤ Reject the entire Order |
| Pbr28-002 | There can only be one order response for one order. |

3.1.2 Support of common business processes

This section identifies the major business processes that are frequently supported within ordering and will clarify if and how they are supported in this profile. The ordering process includes the sending of Orders. This profile supports a “common business process” that is used widely or understood as being relevant for most companies. The main activities supported by this profile are:

Structured Ordering

The Order transaction should support the structured ordering of itemised goods or services, using free text or use of identifiers. The information source of the ordered products may be a (paper or electronic) catalogue.

Accounting

The ordering process must support the allocation of budgets, so the value amounts of the ordered products may be stated. The buyer may provide some information that the supplier is required to place on the invoice for aiding and automation of invoice processing.

Invoice Verification

The buyer may provide some information that the supplier is required to place on the invoice for aiding and automation of invoice approval.

VAT reporting

VAT reporting is not a general requirement on orders. The level of support in orders is to

- Enable VAT reporting in invoices by providing VAT number of buyer.
- VAT can be stated as an estimate to enable buyers to state expected value of order. This can be helpful in automated matching of orders and invoices.

Payment

Information about pre-payment or arrangement of payment are not considered core functionality in order and are therefore not supported.

Transport and delivery

Only limited support is in scope for transport, but it is recognized that the buyer needs to be able to provide some information about expected delivery location, some basic terms, time and contact person for a delivery of an order.

Inventory

Supporting inventory management is not in scope, but structured orders based on catalogues can be used to automate picking at supplier warehouses.

3.2 Ordering information requirements

Some transactions are used in several profiles. The transaction business requirements are specific for the transaction, irrespective of the profile it is used in. Profile specific business requirements have been listed as process business requirements in section 3.1.

Detailed requirements for the order are reused in all profiles using the order transaction.

3.2.1 Order Submission transaction business requirements

General requirements

| ID | Requirement |
|-----------|---|
| tbr01-001 | To control the validation and processing of an order; information that identifies the data model customization used and the business process that the order is part of |
| tbr01-002 | An order must provide information about its creation date and validity |
| tbr01-003 | To provide flexibility in ordering an order must provide for free text notes on document level as well as on individual order lines. |
| tbr01-004 | An order must provide for information about the value of items ordered and what prices, charges and totals (including estimate of VAT) he expects to pay in a way that can be matched against an invoice. |
| tbr01-005 | The order must enable the buyer to send information that can be reported back in a resulting invoice with the purpose of automating the processing of the invoice. |
| tbr01-006 | The order must enable the buyer to reference to contracts and documents that are relevant to prices and terms, including terms of delivery. |
| tbr01-007 | The order must enable the buyer to provide specific details for the item or the variant of the item that is being order such as features, diagrams or specifications. attachment? |
| tbr01-030 | The order must support information needed to specify estimated allowance and charges on document level that apply to the order as a whole. |
| tbr01-031 | All amounts in the Order must be stated in the same currency. |
| tbr01-032 | Order should only contain non-negative prices and positive quantities |

Parties

| ID | Requirement |
|-----------|--|
| tbr01-010 | An electronic order must provide for the electronic address from which the buyer sent the message and the electronic address to which it should be sent. |
| tbr01-011 | For supporting reverse charge VAT invoicing the order must provide for the buyers VAT number and the buyer's legal registration ID in order to enable the seller to issue legally valid invoices. |
| tbr01-013 | An order must provide for contact information for the buyer and the seller including structured name, phone, fax and email and job title. |
| tbr01-009 | An order must provide for identifying the buyer and seller with name and address as well as identifiers, including the sellers' legal registration ID. Use of published identifiers is common for identifying parties. Parties should be free to choose the identification scheme. |
| tbr01-020 | An order must provide for contact details of the party who originated the order as a whole or for individual order lines (i.e. the end user of the items). |
| tbr01-037 | The Order should provide for the invoice address of the Buyer. |

Delivery

| ID | Requirement |
|-----------|---|
| tbr01-021 | An order must provide for details about delivery location (address and ID), some basic delivery terms, delivery time and contact person for a delivery of an order. |
| tbr01-022 | An order must provide for information about the dates before and/or after which the order as whole or individual order lines must be delivered. |
| tbr01-033 | An order line must provide for indication on whether the buyer accepts partial deliveries of that line. |
| tbr01-038 | Basic delivery terms for transport <ul style="list-style-type: none"> ➤ Transport location ➤ Transport terms |

Line Item

| ID | Requirement |
|-----------|--|
| tbr01-025 | Each line in an order must be clearly identified to enable positive referencing from other documents. |
| tbr01-027 | An order must provide for information about the final price that the buyer expects to pay. This makes it possible for the seller to verify against his price lists and contracts. An order must provide for giving the base quantity to which the price applies. |
| tbr01-028 | An order line must provide for information about the quantity ordered and its unit of measure. |
| tbr01-029 | An order line must provide for detailed identification of the ordered item or variant of the item including name, identifiers, description as well as the values for different item properties, diagrams and specifications. |
| tbr01-034 | An order line must provide for supplier identifiers and standard identifiers for products |
| tbr01-035 | It must be possible to state informative price discounts. |

3.2.2 Simple Order Response transaction business requirements

| ID | Requirement |
|-----------|---|
| tbr02-001 | The Order Response must refer to the Order it is responding to. |
| tbr02-002 | The Order Response may state a reason for rejecting the order. |

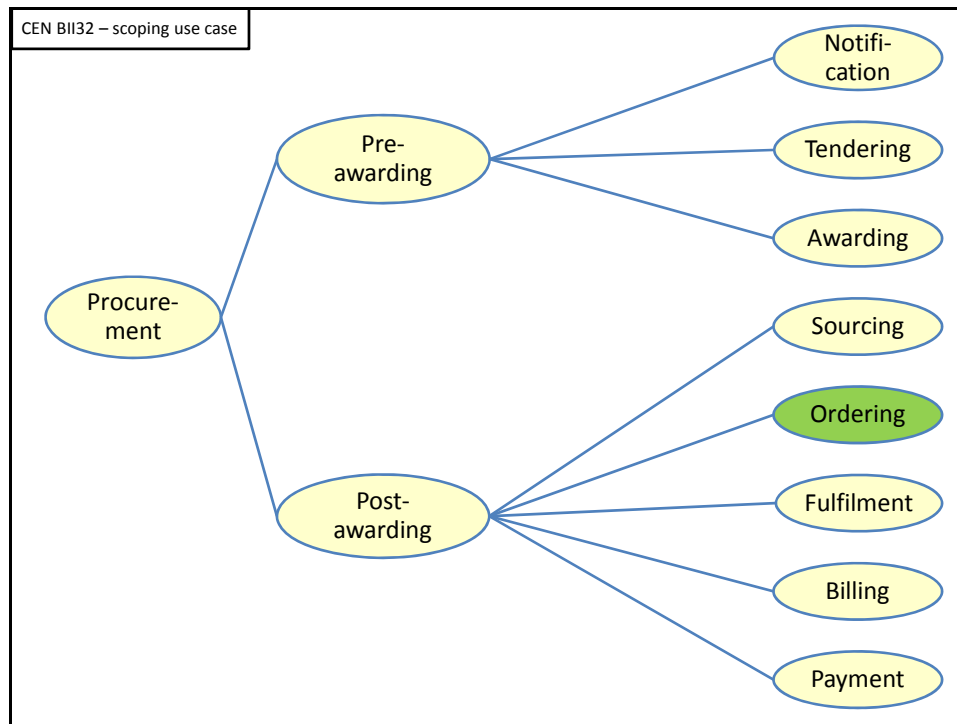


| ID | Requirement |
|-----------|--|
| tbr02-008 | If the Order Response is rejecting the Order, the Order Response should carry supplier contact information for the Buyer to use when resolving issues with the Order Response. |

4 Profile detailed description

4.1 Business processes in scope

Procurement is a complex domain with several key processes, some of which are illustrated in the following figure.



The Simple Ordering profile covers the business processes as highlighted in the above figure.

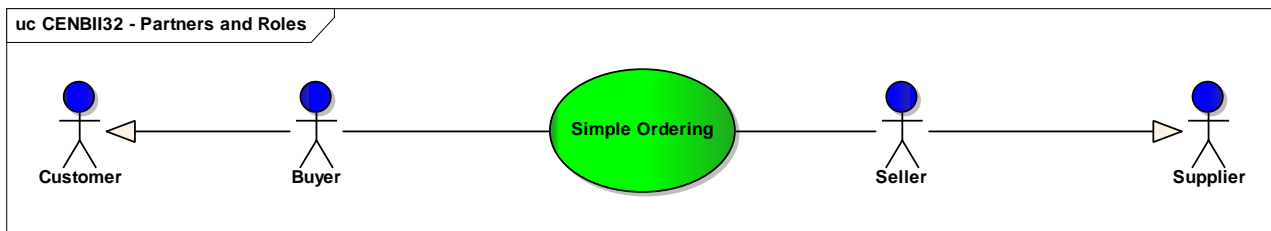
4.2 Roles involved

The following business partners participate in this profile, acting in the roles as defined below.

| Business partners | Description |
|-------------------|---|
| Customer | <p>The customer is the legal person or organization who is in demand of a product or service.</p> <p>Examples of customer roles: buyer, consignee, debtor, contracting authority.</p> |
| Supplier | <p>The supplier is the legal person or organization who provides a product or service.</p> <p>Examples of supplier roles: seller, consignor, creditor, economic operator.</p> |

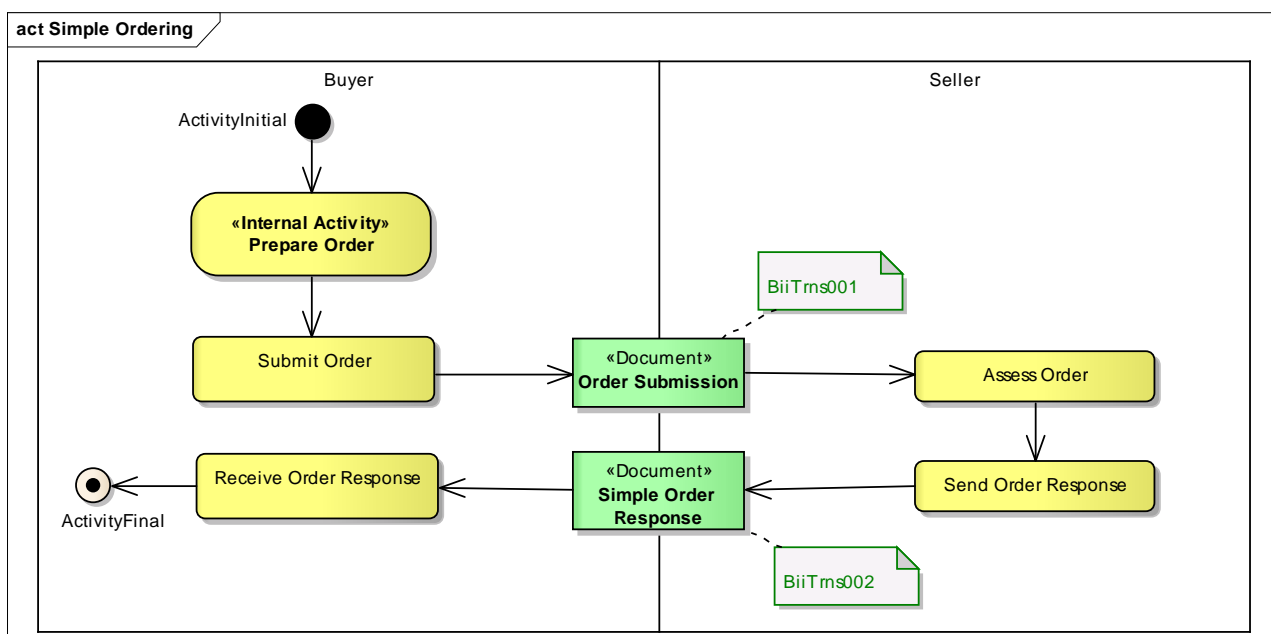
| Party | Role/actor | Description |
|----------|------------|--|
| Customer | Buyer | The buyer is the legal person or organization acting on behalf of the customer and who buys or purchases the goods or services. |
| Supplier | Seller | The seller is the legal person or organization acting on behalf of the supplier and who sells goods or services to the customer. |

The following diagram links the business processes to the roles performed by the Business Partners.



4.3 Simple Ordering Business Process

The following diagram shows the choreography of the business process implemented by the profile. The choreography of business collaborations defines the sequence of interactions when the profile is run within its context.



| Categories | Description and Values |
|-----------------|--|
| Description | <p>The Customer sends an order which the Supplier either accepts or rejects in full.</p> <p>Following an accepted order the Supplier delivers the order.</p> |
| Pre-conditions | <p>The Customer and the Supplier have identified each other.</p> <p>The Supplier has agreed to accept electronic orders.</p> <p>The Customer has agreed to accept electronic order responses.</p> <p>Possibly Customer and Supplier have concluded a contract with general conditions and/or exchanged a Catalogue with product information and pricing.</p> |
| Post-conditions | <p>In the case of a rejected order, no commitments exist between the Customer and the Supplier.</p> <p>In the case of successful ordering, the Seller is to fulfil the order.</p> |

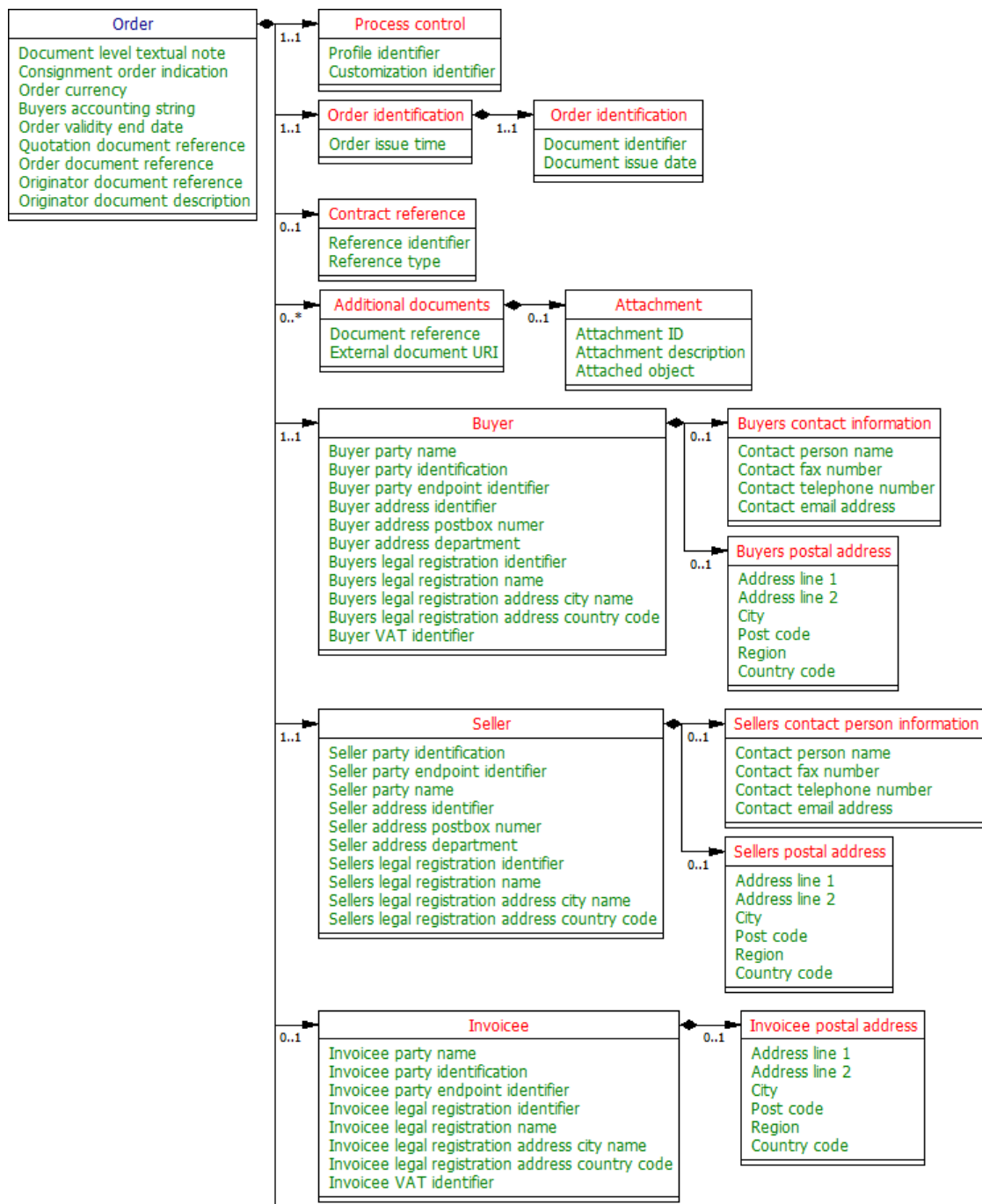
| Categories | Description and Values |
|------------|---|
| Scenarios | <p><i>Accepted Order.</i> The Order is accepted, the products are delivered (out of scope of the profile).</p> <p><i>Rejected Order.</i> The Order is rejected by the Supplier and may be re-issued by the Customer</p> |
| Exceptions | The notification of invoice errors is handled externally. |
| Remarks | None |

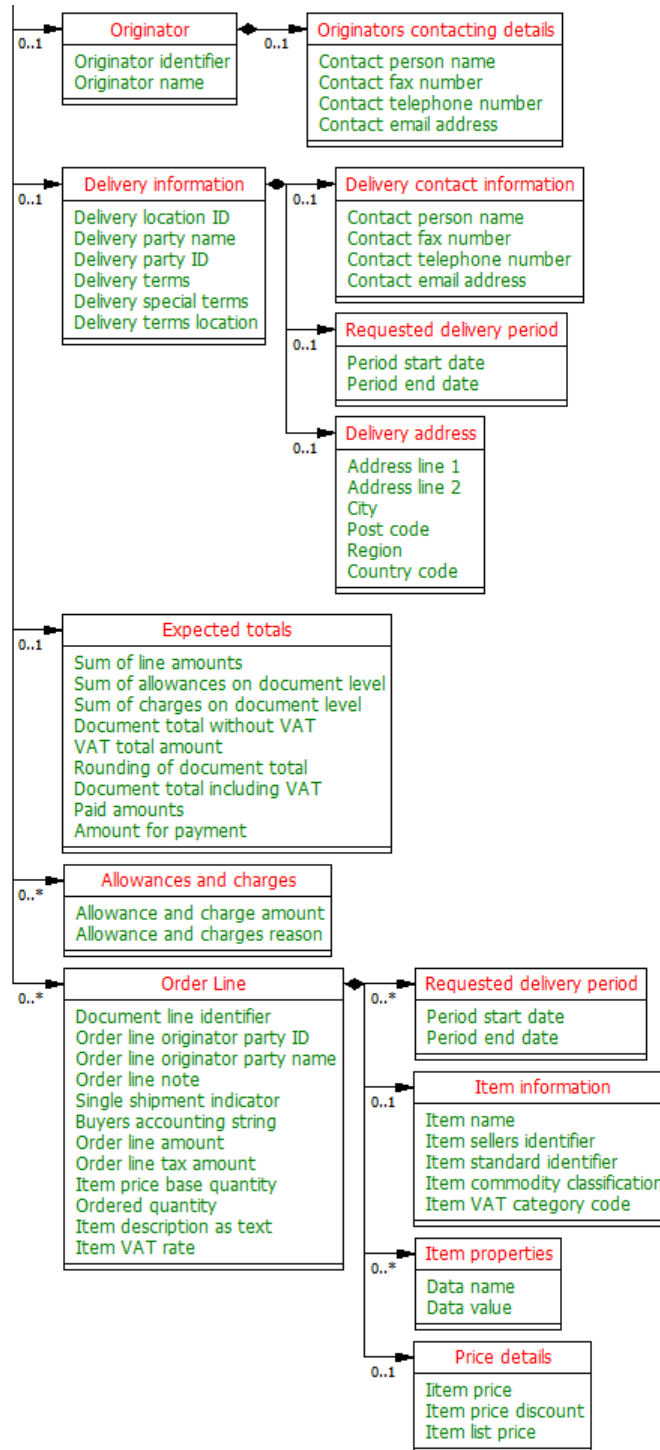
4.4 Transaction Information requirements

4.4.1 Order Submission Transaction

| Categories | Description and Values |
|--------------------|--|
| Identifier | BiiTrns001 |
| Description | A Buyer sends an order to a Seller for any goods or services |
| Partner Types | Customer Supplier |
| Authorized Roles | Buyer Seller |
| Legal Implications | See business rules below. |
| Initial Event | Send Order Submission. |
| Terminal event | Assess Order |
| Constraints | See business rules below |

4.4.1.1 Order Submission Transaction Information Requirements Model





4.4.1.2 Order Submission Transaction Information Requirements

| InfRqID | Crd | Tree and Business term | Usage | Data Type | ReqID | Note |
|-----------|------|---------------------------------|--|---|------------------------|------|
| | | Order | | | | |
| tir01-006 | 0..1 | Document level textual note | Free form text applying to the Order. This element may contain notes or any other similar information that is not contained explicitly in another structure. Textual note. | BiiDT::Text | tbr01-003 | |
| tir01-153 | 0..1 | Consignment order indication | Purchase order or consignment order. If true order is consignment order | BiiDT::Undefined | | |
| tir01-007 | 0..1 | Order currency | The default currency for the Order. | BiiDT::Code | tbr01-004 | |
| tir01-008 | 0..1 | Buyers accounting string | Used by the buyer to specify a reference that should be repeated in e.g. invoice to enable the buyer to automatically book e.g. to the right project, or account. | BiiDT::Text | tbr01-005 | |
| tir01-009 | 0..1 | Order validity end date | The end date for when the order is valid. The end date for the time period within which the seller must respond. | BiiDT::Date | tbr01-002 | |
| tir01-010 | 0..1 | Quotation document reference | A requirement to give a unique reference to the quotation that is the base for the order. | BiiDT::Undefined | tbr01-006 | |
| tir01-011 | 0..1 | Order document reference | Used to reference the initial order that was rejected and a new order is issued. | BiiDT::Undefined | tbr01-006 | |
| tir01-012 | 0..1 | Originator document reference | An associative reference to Originator Document. To be able to give a reference to the internal requisition on the buyer site on which the order is based. | BiiDT::Undefined | tbr01-006 | |
| tir01-013 | 0..1 | Originator document description | Originator document description. | BiiDT::Undefined | tbr01-006 | |
| | 1..1 | Process control | Information about the specification that apply to the transaction. | CENBII common structures::Process control | | |
| tir01-002 | 1..1 | Profile identifier | Identifies the BII profile or business process context in which the transaction appears. | BiiDT::Code | tbr00-001 tbr01-001 | |
| tir01-001 | 1..1 | Customization identifier | Identifies the specification of content and rules that apply to the transaction. | BiiDT::Code | tbr00-002 tbr01-001 | |
| | 1..1 | Order identification | | Main::Order identification | | |
| tir01-005 | 0..1 | Order issue time | The time assigned by the Buyer on which the Order was issued. The time when the order is issued. | BiiDT::Time | tbr01-002 | |
| | 1..1 | Order identification | Information that positively identifies the transaction so that it can be positively reference or looked up. | CENBII common structures::Document identification | tbr01-001 | |
| tir01-003 | 1..1 | Document identifier | An transaction instance must contain an identifier. The identifier enables referencing the document instance for various purposes including referencing between transactions that are part of the same process. An identifier for the Order assigned by the Buyer. | BiiDT::Undefined | tbr01-001 | |
| tir01-004 | 1..1 | Document issue date | The date on which the transaction instance was issued. The date assigned by the Buyer on which the Order was issued. The date when the order is issued | BiiDT::Date | tbr01-002 | |

| InfRqID | Crds | Tree and Business term | Usage | Data Type | ReqID | Note |
|-----------|------|--|---|--------------------------------------|-----------|------|
| | 0..1 | Contract reference | A reference to a document or other source that can be positively identified. Identifies the Contract. An association to Contract. Reference to the contract that governs the order. Such as a framework agreement, financial terms contract etc. | CENBII common structures::Reference | tbr01-006 | |
| tir01-019 | 0..1 | Reference identifier | Positive identification of the reference such as a unique identifier. | BiiDT::Undefined | tbr01-006 | |
| tir01-020 | 0..1 | Reference type | The short description of what is reference such as contract type, document type, meter etc. The type of Contract, expressed as text. | BiiDT::Undefined | tbr01-006 | |
| | 0..n | Additional documents | An associative reference to Additional Document. Reference to any document that has relevance to the order such as drawings, technical specifications. | Main::Additional documents | tbr01-006 | |
| tir01-154 | 0..1 | Document reference | A reference to a document. | BiiDT::Text | tbr01-006 | |
| tir01-018 | 0..1 | External document URI | The Uniform Resource Identifier (URI) that identifies where the external document is located. | BiiDT::Undefined | tbr01-006 | |
| | 0..1 | Attachment | Attached documents | CENBII common structures::Attachment | | |
| tir01-015 | 0..1 | Attachment ID | A positive identification of the relevant document, such as a unique identifier. | BiiDT::Undefined | tbr01-006 | |
| tir01-016 | 0..1 | Attachment description | A short description of the document type. | BiiDT::Text | tbr01-006 | |
| tir01-017 | 0..1 | Attached object | The attached document embedded as binary object. | BiiDT::Binary Object | tbr01-006 | |
| | 1..1 | Buyer | The party who places the order with the intent of buying the listed items according to the stated terms. | Main::Buyer | | |
| tir01-023 | 0..1 | Buyer party name | The name of the party who orders the listed goods. | BiiDT::Text | tbr01-009 | |
| tir01-022 | 0..1 | Buyer party identification | An identification for the buyer party. | BiiDT::Undefined | tbr01-009 | |
| tir01-021 | 0..1 | Buyer party endpoint identifier | Identifies the end point of the routing service. | BiiDT::Identifier | tbr01-010 | |
| tir01-029 | 0..1 | Buyer address identifier | An identifier for a specific address within a scheme of registered addresses. | BiiDT::Identifier | tbr01-009 | |
| tir01-025 | 0..1 | Buyer address postbox number | A post office box number. | BiiDT::Undefined | tbr01-009 | |
| tir01-028 | 0..1 | Buyer address department | An addressable department of an organization. | BiiDT::Undefined | tbr01-009 | |
| tir01-043 | 0..1 | Buyers legal registration identifier | Identifies a company as registered with the company registration scheme. | BiiDT::Identifier | tbr01-012 | |
| tir01-044 | 0..1 | Buyers legal registration name | The official name of the party as registered with the relevant fiscal authority. | BiiDT::Text | tbr01-012 | |
| tir01-045 | 0..1 | Buyers legal registration address city name | Associates with the registered address of the party within a Corporate Registration Scheme. The name of a city, town, or village. | BiiDT::Undefined | tbr01-012 | |
| tir01-046 | 0..1 | Buyers legal registration address country code | Buyers legal registration address country ID | BiiDT::Code | tbr01-012 | |
| tir01-034 | 0..1 | Buyer VAT identifier | Identifies a company as registered with the company registration scheme. | BiiDT::Identifier | tbr01-011 | |

| InfRqID | Crd | Tree and Business term | Usage | Data Type | ReqID | Note |
|-----------|------|--|---|--|-----------|------|
| | 0..1 | Buyers contact information | Used to provide contacting information for a party in general or a person. The buyers contact that can be consulted regarding the order. | CENBII common structures::Contacting details | | |
| tir01-050 | 0..1 | Contact person name | The name of the contact person. | BiiDT::Text | tbr01-014 | |
| tir01-048 | 0..1 | Contact fax number | A fax number for the contact persons. | BiiDT::Undefined | tbr01-013 | |
| tir01-047 | 0..1 | Contact telephone number | A phone number for the contact person. If the person has a direct number, this is that number. | BiiDT::Undefined | tbr01-013 | |
| tir01-049 | 0..1 | Contact email address | The e-mail address for the contact person. If the person has a direct e-mail this is that email. | BiiDT::Undefined | tbr01-013 | |
| | 0..1 | Buyers postal address | Address information. | CENBII common structures::Postal address | tbr01-009 | |
| tir01-032 | 0..1 | Address line 1 | The main address line in a postal address usually the street name and number. | BiiDT::Undefined | tbr01-009 | |
| tir01-027 | 0..1 | Address line 2 | An additional address line in a postal address that can be used to give further details supplementing the main line. Common use are secondary house number in a complex or in a building. | BiiDT::Undefined | tbr01-009 | |
| tir01-031 | 0..1 | City | The common name of the city where the postal address is. The name is written in full rather than as a code. | BiiDT::Undefined | tbr01-009 | |
| tir01-024 | 0..1 | Post code | The identifier for an addressable group of properties according to the relevant national postal service, such as a ZIP code or Post Code. | BiiDT::Undefined | tbr01-009 | |
| tir01-141 | 0..1 | Region | For specifying a region, county, state, province etc. within a country by using text. | BiiDT::Undefined | tbr01-009 | |
| tir01-033 | 0..1 | Country code | The country where the address is. The country should always be given by using ISO code 3166 alpha 2 | BiiDT::Code | tbr01-009 | |
| | 1..1 | Seller | A seller is a party to whom the buyer sends an order for purchase with the purpose of buying the listed items. | Main::Seller | | |
| tir01-059 | 0..1 | Seller party identification | Identifies a party. | BiiDT::Undefined | tbr01-009 | |
| tir01-058 | 0..1 | Seller party endpoint identifier | Identifies the end point of the routing service, e.g., EAN Location Number, GLN. | BiiDT::Text | tbr01-010 | |
| tir01-060 | 0..1 | Seller party name | The name of the party. | BiiDT::Text | tbr01-017 | |
| tir01-061 | 0..1 | Seller address identifier | An identifier for a specific address within a scheme of registered addresses. | BiiDT::Identifier | tbr01-017 | |
| tir01-062 | 0..1 | Seller address postbox number | A post office box number. | BiiDT::Undefined | tbr01-017 | |
| tir01-066 | 0..1 | Seller address department | An addressable department of an organization. | BiiDT::Undefined | tbr01-017 | |
| tir01-070 | 0..1 | Sellers legal registration identifier | Identifies a company as registered with the company registration scheme. | BiiDT::Identifier | tbr01-018 | |
| tir01-071 | 0..1 | Sellers legal registration name | The official name of the party as registered with the relevant fiscal authority. | BiiDT::Text | tbr01-018 | |
| tir01-072 | 0..1 | Sellers legal registration address city name | Associates with the registered address of the party within a Corporate | BiiDT::Undefined | tbr01-018 | |

| InfRqID | Crd | Tree and Business term | Usage | Data Type | ReqID | Note |
|-----------|------|--|---|--|-----------|------|
| | | | Registration Scheme. The name of a city, town, or village. | | | |
| tir01-073 | 0..1 | Sellers legal registration address country code | Buyers legal registration address country ID | BiiDT::Code | tbr01-018 | |
| | 0..1 | Sellers contact person information | Used to provide contacting information for a party in general or a person. | CENBII common structures::Contacting details | | |
| tir01-074 | 0..1 | Contact person name | The name of the contact person. | BiiDT::Text | tbr01-014 | |
| tir01-075 | 0..1 | Contact fax number | A fax number for the contact persons. | BiiDT::Undefined | tbr01-014 | |
| tir01-077 | 0..1 | Contact telephone number | A phone number for the contact person. If the person has a direct number, this is that number. | BiiDT::Undefined | tbr01-014 | |
| tir01-076 | 0..1 | Contact email address | The e-mail address for the contact person. If the person has a direct e-mail this is that email. | BiiDT::Undefined | tbr01-014 | |
| | 0..1 | Sellers postal address | Address information. | CENBII common structures::Postal address | | |
| tir01-063 | 0..1 | Address line 1 | The main address line in a postal address usually the street name and number. | BiiDT::Undefined | tbr01-017 | |
| tir01-064 | 0..1 | Address line 2 | An additional address line in a postal address that can be used to give further details supplementing the main line. Common use are secondary house number in a complex or in a building. | BiiDT::Undefined | tbr01-017 | |
| tir01-065 | 0..1 | City | The common name of the city where the postal address is. The name is written in full rather than as a code. | BiiDT::Undefined | tbr01-017 | |
| tir01-068 | 0..1 | Post code | The identifier for an addressable group of properties according to the relevant national postal service, such as a ZIP code or Post Code. | BiiDT::Undefined | tbr01-017 | |
| tir01-142 | 0..1 | Region | For specifying a region, county, state, province etc. within a country by using text. | BiiDT::Undefined | tbr01-017 | |
| tir01-069 | 0..1 | Country code | The country where the address is. The country should always be given by using ISO code 3166 alpha 2 | BiiDT::Code | tbr01-017 | |
| | 0..1 | Invoicee | | Main::Invoicee | | |
| tir01-155 | 0..1 | Invoicee party name | The name of the party who orders the listed goods. | BiiDT::Text | | |
| tir01-156 | 0..1 | Invoicee party identification | An identification for the buyer party. | BiiDT::Undefined | | |
| tir01-157 | 0..1 | Invoicee party endpoint identifier | Identifies the end point of the routing service. | BiiDT::Identifier | | |
| tir01-158 | 0..1 | Invoicee legal registration identifier | Identifies a company as registered with the company registration scheme. | BiiDT::Identifier | | |
| tir01-159 | 0..1 | Invoicee legal registration name | The official name of the party as registered with the relevant fiscal authority. | BiiDT::Text | | |
| tir01-160 | 0..1 | Invoicee legal registration address city name | Associates with the registered address of the party within a Corporate Registration Scheme. The name of a city, town, or village. | BiiDT::Undefined | | |
| tir01-161 | 0..1 | Invoicee legal registration address country code | Buyers legal registration address country ID | BiiDT::Code | | |
| tir01-162 | 0..1 | Invoicee VAT identifier | Identifies a company as registered with the company registration scheme. | BiiDT::Identifier | | |

| InfRqID | Crd | Tree and Business term | Usage | Data Type | ReqID | Note |
|-----------|------|--------------------------------|---|--|-----------|------|
| | 0..1 | Invoicee postal address | Address information. | CENBII common structures::Postal address | | |
| tir01-163 | 0..1 | Address line 1 | The main address line in a postal address usually the street name and number. | BiiDT::Undefined | | |
| tir01-164 | 0..1 | Address line 2 | An additional address line in a postal address that can be used to give further details supplementing the main line. Common use are secondary house number in a complex or in a building. | BiiDT::Undefined | | |
| tir01-165 | 0..1 | City | The common name of the city where the postal address is. The name is written in full rather than as a code. | BiiDT::Undefined | | |
| tir01-166 | 0..1 | Post code | The identifier for an addressable group of properties according to the relevant national postal service, such as a ZIP code or Post Code. | BiiDT::Undefined | | |
| tir01-167 | 0..1 | Region | For specifying a region, county, state, province etc. within a country by using text. | BiiDT::Undefined | | |
| tir01-168 | 0..1 | Country code | The country where the address is. The country should always be given by using ISO code 3166 alpha 2 | BiiDT::Code | | |
| | 0..1 | Originator | The party on whos behalf the purchase is made, i.e. the end user. | Main::Originator | tbr01-020 | |
| tir01-081 | 0..1 | Originator identifier | Identifies a party. | BiiDT::Undefined | tbr01-0 | |
| tir01-082 | 0..1 | Originator name | The name of the party. | BiiDT::Text | tbr01-0 | |
| | 0..1 | Originators contacting details | Used to provide contacting information for a party in general or a person. | CENBII common structures::Contacting details | | |
| tir01-086 | 0..1 | Contact person name | The name of the contact person. | BiiDT::Text | tbr01-020 | |
| tir01-084 | 0..1 | Contact fax number | A fax number for the contact persons. | BiiDT::Undefined | tbr01-020 | |
| tir01-083 | 0..1 | Contact telephone number | A phone number for the contact person. If the person has a direct number, this is that number. | BiiDT::Undefined | tbr01-020 | |
| tir01-085 | 0..1 | Contact email address | The e-mail address for the contact person. If the person has a direct e-mail this is that email. | BiiDT::Undefined | tbr01-020 | |
| | 0..1 | Delivery information | Information realting to the physical delivery of the ordered goods. | Main::Delivery information | | |
| tir01-169 | 0..1 | Delivery location ID | | BiiDT::Identifier | | |
| tir01-102 | 0..1 | Delivery party name | | BiiDT::Text | tbr01-0 | |
| tir01-101 | 0..n | Delivery party ID | | BiiDT::Text | tbr01-0 | |
| tir01-107 | 0..1 | Delivery terms | The ability for the buyer to specify what shipping terms should apply the delivery of the order. | BiiDT::Text | tbr01-023 | |
| tir01-108 | 0..1 | Delivery special terms | A description of special conditions relating to the Delivery Terms. | BiiDT::Text | tbr01-023 | |
| tir01-109 | 0..1 | Delivery terms location | An association to Location, e.g., a port. The unique identifier for the location, e.g., the EAN Location Number, GLN. | BiiDT::Text | tbr01-023 | |
| | 0..1 | Delivery contact information | Used to provide contacting information for a party in general or a person. | CENBII common structures::Contacting | | |

| InfRqID | Crd | Tree and Business term | Usage | Data Type | ReqID | Note |
|-----------|------|-------------------------------------|---|---|-----------|------|
| | | | | details | | |
| tir01-103 | 0..1 | Contact person name | The name of the contact person. | BiiDT::Text | tbr01-0 | |
| tir01-105 | 0..1 | Contact fax number | A fax number for the contact persons. | BiiDT::Undefined | | |
| tir01-104 | 0..1 | Contact telephone number | A phone number for the contact person. If the person has a direct number, this is that number. | BiiDT::Undefined | | |
| tir01-106 | 0..1 | Contact email address | The e-mail address for the contact person. If the person has a direct e-mail this is that email. | BiiDT::Undefined | | |
| | 0..1 | Requested delivery period | Dates that describe a period that has relevance in the context of the transaction. The requested Period for Delivery. Use only if the same Requested Delivery Period applies to all Order Lines. | CENBII common structures::Date periods | tbr01-023 | |
| tir01-099 | 1..1 | Period start date | The date on which the period starts. The start dates counts as part of the period. | BiiDT::Date | tbr01-023 | |
| tir01-100 | 1..1 | Period end date | The date on which the period ends. The end date counts as part of the period. | BiiDT::Date | tbr01-023 | |
| | 0..1 | Delivery address | Address information. | CENBII common structures::Postal address | tbr01-021 | |
| tir01-092 | 0..1 | Address line 1 | The main address line in a postal address usually the street name and number. | BiiDT::Undefined | tbr01-021 | |
| tir01-093 | 0..1 | Address line 2 | An additional address line in a postal address that can be used to give further details supplementing the main line. Common use are secondary house number in a complex or in a building. | BiiDT::Undefined | tbr01-021 | |
| tir01-096 | 0..1 | City | The common name of the city where the postal address is. The name is written in full rather than as a code. | BiiDT::Undefined | tbr01-021 | |
| tir01-097 | 0..1 | Post code | The identifier for an addressable group of properties according to the relevant national postal service, such as a ZIP code or Post Code. | BiiDT::Undefined | tbr01-021 | |
| tir01-144 | 0..1 | Region | For specifying a region, county, state, province etc. within a country by using text. | BiiDT::Undefined | tbr01-021 | |
| tir01-098 | 0..1 | Country code | The country where the address is. The country should always be given by using ISO code 3166 alpha 2 | BiiDT::Code | tbr01-021 | |
| | 0..1 | Expected totals | The calculated totals of the document. The amounts that the buyer expects the seller to charge for the ordered goods. | CENBII common structures::Document totals | tbr01-024 | |
| tir01-115 | 1..1 | Sum of line amounts | Sum of line amounts in the document. The total of Line Extension Amounts net of tax and settlement discounts, but inclusive of any applicable rounding amount. | BiiDT::Numeric | tbr01-024 | |
| tir01-116 | 0..1 | Sum of allowances on document level | Sum of all allowances on header level in the document. Allowances on line level are included in the line amount and summed up into the "sum of line amounts" | BiiDT::Numeric | tbr01-024 | |

| InfRqID | Crđ | Tree and Business term | Usage | Data Type | ReqID | Note |
|-----------|------|----------------------------------|---|---|-----------|---|
| tir01-117 | 0..1 | Sum of charges on document level | Sum of all charge on header level in the document. Charges on line level are included in the line amount and summed up into the "sum of line amounts" | BiiDT::Numeric | tbr01-024 | |
| tir01-145 | 1..1 | Document total without VAT | The "Sum of line amounts" plus "sum of allowances on document level" plus "sum of charges on document level". | BiiDT::Numeric | | |
| tir01-114 | 0..1 | VAT total amount | The total VAT amount that is "added to the document total w/o VAT". This is the sum of all VAT subcategory amounts. An association to the total tax amount of the Order (as calculated by the Buyer). The expected Tax Total in the corresponding invoice. The total tax amount for particular tax scheme e.g. VAT; the sum of each of the tax subtotals for each tax category within the tax scheme. Sum of line tax amounts. An association to the total tax amount of the Order (as calculated by the Buyer). The expected Tax Total in the corresponding invoice. | BiiDT::Numeric | tbr01-024 | |
| tir01-146 | 0..1 | Rounding of document total | Any rounding of the "Document total including VAT" | BiiDT::Numeric | | |
| tir01-147 | 1..1 | Document total including VAT | The total value including VAT | BiiDT::Numeric | | |
| tir01-148 | 0..1 | Paid amounts | Any amounts that have been paid a-priory. | BiiDT::Numeric | | |
| tir01-118 | 1..1 | Amount for payment | The amount that is expected to be paid based on the document. This amount is the "Document total including VAT" less the "paid amounts" that have been paid a-priory. The total amount to be paid. Estimated total amount of order including VAT | BiiDT::Numeric | tbr01-024 | |
| | 0..n | Allowances and charges | Allowance or charges that are added/deducted to a given amount Allowances and charges that the order expects the seller to apply to the ordered goods. | CENBII common structures:: Allowances and charges | tbr01-024 | |
| tir01-113 | 1..1 | Allowance and charge amount | The net amount of the allowance or the charge exluding VAT. | BiiDT::Numeric | tbr-024 | |
| tir01-112 | 1..1 | Allowance and charges reason | A textual reason for the allowance or the charge. Can also be its name. | BiiDT::Undefined | tbr01-024 | |
| | 0..n | Order Line | | Main::Order Line | | |
| tir01-120 | 1..1 | Document line identifier | Identifies the Line Item assigned by the buyer. | BiiDT::Undefined | tbr01-0 | |
| tir01-121 | 0..1 | Order line originator party ID | The party who originated Order. | BiiDT::Undefined | tbr01-020 | |
| tir01-122 | 0..1 | Order line originator party name | The party who originated Order. | BiiDT::Text | tbr01-020 | |
| tir01-123 | 0..1 | Order line note | Free-form text applying to the Order Line. This element may contain notes or any other similar information that is not contained explicitly in another structure. Is to capture any free form description related to the order line as a whole. | BiiDT::Text | tbr01-003 | |
| tir01-124 | 0..1 | Single shipment indicator | Indicates if the line items must be delivered in a single shipment. | BiiDT::Indicator | tbr01-026 | Change name to "Partial Delivery Allowed Indicator" |

| InfRqID | Crđ | Tree and Business term | Usage | Data Type | ReqID | Note |
|-----------|------|-------------------------------|---|--|-----------|------|
| tir01-125 | 0..1 | Buyers accounting string | The buyer's accounting information applied to the Line Item, expressed as text. | BiiDT::Undefined | tbr01-0 | |
| tir01-128 | 0..1 | Order line amount | The total amount for the Line Item, including Allowance Charges but net of taxes. The expected line amount excluding VAT but inclusive of other charges, allowances and taxes. | BiiDT::Undefined | tbr01-024 | |
| tir01-129 | 0..1 | Order line tax amount | The total tax amount for the Line Item. The total amounts of taxes on the line. | BiiDT::Undefined | tbr01-024 | |
| tir01-131 | 0..1 | Item price base quantity | The actual quantity to which the price applies. | BiiDT::Undefined | tbr01-027 | |
| tir01-132 | 0..1 | Ordered quantity | The quantity of Items for the Line Item. The quantity for the order line. | BiiDT::Undefined | tbr01-028 | |
| tir01-133 | 0..1 | Item description as text | Free-form field that can be used to give a text description of the item. A detailed description of the item. Use one description per language. Test text for capturing notes | BiiDT::Undefined | tbr01-029 | |
| tir01-170 | 0..1 | Item VAT rate | | BiiDT::Text | | |
| | 0..n | Requested delivery period | Dates that describe a period that has relevance in the context of the transaction. | CENBII common structures::Date periods | | |
| tir01-126 | 1..1 | Period start date | The date on which the period starts. The start dates counts as part of the period. | BiiDT::Date | tbr01-022 | |
| tir01-127 | 1..1 | Period end date | The date on which the period ends. The end date counts as part of the period. | BiiDT::Date | tbr01-022 | |
| | 0..1 | Item information | Information about an item. | CENBII common structures::Item information | | |
| tir01-134 | 0..1 | Item name | A short name for an item. A short name optionally given to an item, such as a name from a Catalogue, as distinct from a description. A short name for the item. | BiiDT::Text | tbr01-029 | |
| tir01-135 | 0..1 | Item sellers identifier | The sellers identifier for the item. Associates the item with its identification according to the seller's system. The sellers ID for the item. | BiiDT::Undefined | tbr01-029 | |
| tir01-136 | 0..1 | Item standard identifier | A item identifier based on a registered schema. Associates the item with its identification according to a standard system. Standardized ID for the item | BiiDT::Identifier | tbr01-029 | |
| tir01-149 | 0..2 | Item commodity classification | A classification code for classifying the item by its type or nature. | BiiDT::Code | tbr01-0 | |
| tir01-150 | 0..1 | Item VAT category code | The VAT code that indicates what VAT details apply to the item. The VAT details are given on the document level. | BiiDT::Undefined | tbr01-0 | |
| | 0..n | Item properties | Description of additional data. Any properties of the ordered item that can not be specified in other elements. | CENBII common structures::Data value pairs | | |
| tir01-138 | 1..1 | Data name | The name of the data. The name of the data must be sufficiently descriptive to define the value. E.g. by including the unit when relevant. | BiiDT::Undefined | tbr01-029 | |

| InfRqID | Crd | Tree and Business term | Usage | Data Type | ReqID | Note |
|-----------|------|------------------------|---|---|----------------------|------|
| tir01-139 | 1..1 | Data value | The name of the item property. The value of the data. The item property value. | BiiDT::Undefined | tbr01-029 | |
| | 0..1 | Price details | The price of an item and its discounts. | CENBII common structures::Price details | | |
| tir01-130 | 0..1 | Item price | The net price of an item including discounts or surcharges that apply to the price. Although price is an optional element in an order it recommended as best practice to either state the price or provide reference to an appropriate source from which the price can be identified such as a contract, catalogue or a quote.. The price amount. The net price of the item including all allowances, charges and taxes but excluding VAT. | BiiDT::Numeric | tbr01-0 tbr01-027 | |
| tir01-151 | 0..1 | Item price discount | The total discount subtracted from the gross price to reach the net price. | BiiDT::Numeric | tbr01-0 | |
| tir01-152 | 0..1 | Item list price | The gross price of the item before subtracting discounts. E.g. list price. | BiiDT::Numeric | | |

4.4.1.3 Order Submission Transaction Business Rules

Facts

| RuleID | rulenote | target | errorlevel | source | ReqID |
|---------------|--|-----------------|------------|--------|-----------|
| BII2-T01-R005 | An order MUST provide information about its validity end date | Order | fatal | T01 | tbr01-002 |
| BII2-T01-R009 | An order MUST be stated in a single currency | Order | fatal | T01 | tbr01-031 |
| BII2-T01-R010 | Each order line ordered quantity MUST not be negative | Order Line | fatal | T01 | tbr01-032 |
| BII2-T01-R011 | Each order line item net price MUST not be negative | Item Price | fatal | T01 | tbr01-032 |
| BII2-T01-R012 | Expected total amount for payment MUST NOT be negative, if expected total amount for payment is provided | Expected totals | fatal | T01 | tbr01-032 |
| BII2-T01-R013 | Expected total sum of line amounts MUST NOT be negative, if expected total sum of line amounts is provided | Expected totals | fatal | T01 | tbr01-032 |
| BII2-T01-R021 | An order MUST have the buyer party name or a buyer party identifier | Order | fatal | T01 | tbr01-013 |
| BII2-T01-R022 | An order MUST have the seller party name or a seller party identifier | Order | fatal | T01 | tbr01-013 |
| BII2-T01-R023 | A sellers postal address SHOULD have at least all of the following: - Address line - City - Post code - Country code | Seller | warning | T01 | tbr01-013 |
| BII2-T01-R024 | A buyers postal address SHOULD have at least all of the following: - Address line | Buyer | warning | T01 | tbr01-013 |

| RuleID | rulenote | target | errorlevel | source | ReqID |
|---------------|--|------------------|------------|--------|-----------|
| | - City - Post code - Country code | | | | |
| BII2-T01-R025 | A delivery address SHOULD have at least and address identifier or all of the following: - City - Post code - Country code | Delivery Address | warning | T01 | tbr01-021 |
| BII2-T01-R026 | An item standard Identifier SHOULD have an identification schema (e.g. GTIN) | Item | warning | T01 | tbr01-034 |
| BII2-T01-R027 | An item commodity classification SHOULD have a code list identifier (e.g. CPV or UNSPSC) | Item | warning | T01 | tbr01-034 |
| BII2-T01-R029 | Each order line SHOULD have an ordered quantity | Order Line | warning | T01 | tbr01-028 |
| BII2-T01-R030 | Each order line ordered quantity MUST have an associated unit of measure | Quantity | fatal | T01 | tbr01-028 |
| BII2-T01-R031 | Each order line MUST have an item identifier and/or an item name | Order Line | fatal | T01 | tbr01-029 |

Integrity constraints

| RuleID | rulenote | target | errorlevel | source | ReqID |
|---------------|--|---------------|------------|--------|-----------|
| BII2-T01-R001 | An order MUST have a customization identifier | Order | fatal | T01 | tbr01-001 |
| BII2-T01-R002 | An order MUST have a profile identifier | Order | fatal | T01 | tbr01-001 |
| BII2-T01-R003 | Each order line MUST have a document line identifier that is unique within the order | Order Line | fatal | T01 | tbr01-025 |
| BII2-T01-R004 | An order MUST have a document issue date | Order | fatal | T01 | tbr01-002 |
| BII2-T01-R006 | An order MUST have a document identifier | Order | fatal | T01 | tbr01-005 |
| BII2-T01-R007 | Allowances MUST have an allowance reason | Allowance | fatal | T01 | tbr01-008 |
| BII2-T01-R008 | Charges MUST have a charge reason | Charge | fatal | T01 | tbr01-008 |
| BII2-T01-R019 | Each item property MUST have a data name, if item property is provided | Item property | fatal | T01 | tbr01-029 |
| BII2-T01-R020 | Each item property MUST have a data value, if item property is provided | Item property | fatal | T01 | tbr01-029 |

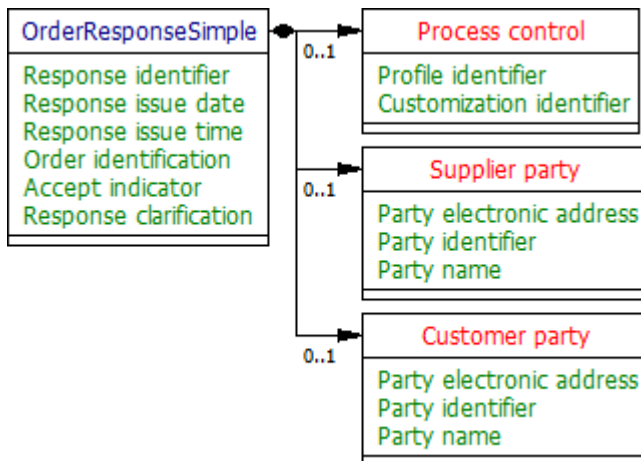
Calculation rules

| RuleID | rulenote | target | errorlevel | source | ReqID |
|---------------|---|-----------------|------------|--------|-----------|
| BII2-T01-R014 | Expected total sum of line amounts MUST equal the sum of the order line amounts at order line level, if expected total sum of line amounts is provided | Expected totals | fatal | T01 | tbr01-027 |
| BII2-T01-R015 | Expected total sum of allowance at document level MUST be equal to the sum of allowance amounts at document level, if expected total sum of allowance at document level is provided | Expected totals | fatal | T01 | tbr01-027 |
| BII2-T01-R016 | Expected total sum of charges at document level MUST be equal to the sum of charges at document level, if expected total sum of charges at document level is provided | Expected totals | fatal | T01 | tbr01-027 |
| BII2-T01-R017 | Expected total amount for payment MUST be equal to the sum of line amounts minus sum of allowances at document level plus sum of charges at document level and VAT total amount, if expected total amount for payment is provided | Expected totals | fatal | T01 | tbr01-027 |
| BII2-T01-R018 | VAT total amount SHOULD be the sum of order line tax amounts, if order line tax amounts are provided | Tax Total | warning | T01 | tbr01-027 |

4.4.2 Order Response simple Transaction

| Categories | Description and Values |
|--------------------|---|
| Identifier | BiiTrns002 |
| Description | A Seller responds to the order of the Buyer |
| Partner Types | Customer Supplier |
| Authorized Roles | Buyer Seller |
| Legal Implications | See business rules below. |
| Constraints | See business rules below |

4.4.2.1 Order Response simple Transaction Information Requirements Model



4.4.2.2 Order Response simple Transaction Information Requirements

| InfRqID | Crđ | Tree and Business term | Usage | Data Type | ReqID | Note |
|-----------|------|--------------------------|---|---|-----------|------|
| | | OrderResponseSimple | | | | |
| tir02-001 | 0..1 | Response identifier | Identifies the response itself. | BiiDT::Identifier | | |
| tir02-002 | 0..1 | Response issue date | The date on which the response is created. | BiiDT::Date | | |
| tir02-003 | 0..1 | Response issue time | The time when the response is issued | BiiDT::Time | | |
| tir02-004 | 0..1 | Order identification | A positive identification of the order for which the response is sent. | BiiDT::Undefined | tbr02-001 | |
| tir02-005 | 0..1 | Accept indicator | An indicator that states the suppliers decision on whether he accepts or rejects the referenced order without changes. A positive indicator (e.g. TRUE) means that the seller accepts and vice versa. | BiiDT::Indicator | tbr02-002 | |
| tir02-006 | 0..1 | Response clarification | Clarification of the suppliers decision. | BiiDT::Text | tbr02-002 | |
| | 0..1 | Process control | Information about the specification that apply to the transaction. | CENBII common structures::Process control | | |
| tir02-007 | 1..1 | Profile identifier | Identifies the BII profile or business process context in which the transaction appears. | BiiDT::Code | tbr00-001 | |
| tir02-008 | 1..1 | Customization identifier | Identifies the specification of content and rules that apply to the transaction. | BiiDT::Code | tbr00-002 | |
| | 0..1 | Supplier party | The party that is responding to an order by sending a order response. | Main::Party | | |
| tir02-009 | 0..1 | Party electronic address | An order response may contain the party electronic address. The address can be of any format and the format should be identified in the message. | BiiDT::Identifier | | |
| tir02-010 | 0..1 | Party identifier | The party identifier. | BiiDT::Undefined | | |
| tir02-011 | 0..1 | Party name | The party name. | BiiDT::Text | | |
| | 0..1 | Customer party | The party that sent the order that is receiving the response.. | Main::Party | | |
| tir02-012 | 0..1 | Party electronic address | An order response may contain the party electronic address. The address can be of any format and the format should be identified in the message. | BiiDT::Identifier | | |
| tir02-013 | 0..1 | Party identifier | The party identifier. | BiiDT::Undefined | | |
| tir02-014 | 0..1 | Party name | The party name. | BiiDT::Text | | |

4.4.2.3 Order Response simple Transaction Business Rules

| RuleID | rulenote | target | errorlevel | source | ReqID |
|---------------|--|----------------|------------|--------|-------|
| BII2-T02-R001 | An order response MUST have a syntax identifier | Order Response | fatal | T02 | |
| BII2-T02- | An order response MUST have a customization identifier | Order Response | fatal | T02 | |

| RuleID | rulenote | target | errorlevel | source | ReqID |
|---------------|---|----------------|------------|--------|-------|
| R002 | | | | | |
| BII2-T02-R003 | An order response MUST have a profile identifier | Order Response | fatal | T02 | |
| BII2-T02-R004 | Only one note field must be specified | Order Response | warning | T02 | |
| BII2-T02-R005 | An order response MUST contain the full name or an identifier of the customer | Customer | fatal | T02 | |
| BII2-T02-R006 | An order response MUST contain the full name or an identifier of the supplier | Supplier | fatal | T02 | |

5 Implementation

The following documents define the binding of the transactions to various syntaxes:

| Transaction | Syntax | Binding document |
|--------------------|----------------|-------------------------|
| BiiTrns001 | UN/CEFACT D11A | BiiTrns01-SB-Cefact.rtf |
| BiiTrns001 | UBL 2.1 | BiiTrns01-SB-UBL.rtf |
| BiiTrns002 | UN/CEFACT D11A | BiiTrns02-SB-Cefact.rtf |
| BiiTrns002 | UBL 2.1 | BiiTrns02-SB-UBL.rtf |

These documents have been annexed to this profile.

Validation tools, such as Schematron files, are available on the BII2 web site: <http://www.cenbii.eu/>

6 References

6.1 General references relevant for all BII profiles

External documents

- UN/CEFACT Modelling Methodology (available at <http://www.untmg.org/specifications/>)
- UML (Unified Modelling Language), version 2.0 (available at <http://www.omg.org/spec/UML/2.0/>)

Related publications from CEN/ISSS WS/BII:

- CEN CWA 16073:2010 – BII1 Profiles and deliverables
- CEN CWA xxxx0: BII2 Architecture
- CEN CWA xxxx1, BII2 eNotification profile
- CEN CWA xxxx2, BII2 eTendering profiles
- CEN CWA xxxx3, BII2 eCatalogue profiles

BII2 web site: <http://www.cenbii.eu/>