



European Committee for Standardization
Comité Européen de Normalisation
Europäisches Komitee für Normung

CEN/WS/BII2/BII03

BII03 – Order Only

PROFILE

DRAFT

Business Domain: Post award procurement

Business Process: Procurement

Document Identification: CEN/WS/BII2/Profile BII03

Version: 2.0

Release: 2012-06-27

Date of approval:

Document Summary

This profile describes a process comprising only an electronic (purchase) Order. It allows for electronic ordering of goods and services/services that are standardized as well as those that are non-standard or not easily described in catalogues. The Order may contain items (goods or services) with item identifiers and/or items identified by name/description. Because of this, the internal processes for transaction handling at the Supplier may require manual intervention. This process is intended to result in acceptance or rejection of the Order, but such responses are external. This profile can be used with little or no integration to ERP systems.

Editors

- Oriol Bausà Peris
- Georg Birgisson
- Fred van Blommestein
- Arofan Gregory
- Anders Kingstedt

Contributors

CEN/ISSS WS/BII2 Post Award Working group:

- Bergthor Skulason (chair)
- Antonia Caressa, Consip S.p.A., IT
- Arianna Brutti, Enea, IT
- Bao Nguyen, Difi, NO
- Douglas Hill, GS1, DK
- Flemming Moller Hansen, Evenex, DK
- Jan Bo Sørensen, Evenex, DK
- Jan Mærøe, DIFI, NO
- Jaroslav Fleijberk, GS1, CZ
- Joao Frade, PWC/EC, EU
- Jostein Frømyr, EDISYS, NO
- Klaus Vilstrup Pedersen, Difi, NO
- Martin Forsberg, SFTI, SE
- Michael Dill, Gefeg, DE
- Nicoletta Lippi, Consip S.p.A., IT
- Peter Borresen, ebConnect, DK
- Sören Lennartsson, SFTI, SE
- Sven Rasmussen, NITA, DK
- Veit Jahns, University of Duisburg-Essen, DE

Table of Contents

1	Introduction.....	4
1.1	CEN WS/BII2 profiles	4
1.2	CEN WS/BII2 Post award support.....	5
1.3	Implementation, conformance and customization.....	6
2	Business environment	7
2.1	Introduction.....	7
2.2	Objectives.....	7
2.3	Scope	7
3	Requirements	8
3.1	Ordering process requirements.....	8
3.1.1	Support of common business processes	8
3.2	Ordering information requirements	10
3.2.1	Order Submission transaction business requirements	10
4	Profile detailed description	12
4.1	Business processes in scope	12
4.2	Roles involved	12
4.3	Ordering Business Process.....	14
4.4	Transaction information requirements.....	15
4.4.1	Order Submission Transaction.....	15
5	Implementation.....	29
6	References	30
6.1	General references relevant for all BII profiles.....	30

1 Introduction

This profile is a deliverable of the CEN ISSS BII2 workshop.

The original CEN Workshop on **Business Interoperability Interfaces for public procurement in Europe** (CEN ISSS BII) was concluded in December 2009, and its results, including a set of profiles, were issued as **CWA 16073:2010**. The objective of the second phase of the workshop – CEN WS/BII2 – was to provide a framework for interoperability in pan-European electronic procurement transactions, expressed as a set of requirements and technical specifications. The requirements are input into UN/CEFACT and the specifications are compatible with UN/CEFACT in order to ensure global interoperability.

Based on user input the CEN WS/BII2 has issued a number of new profiles and reviewed and updated a number of the profiles published as part of CWA 16073:2010. One of the updated profiles is profile BII03 that describes the Order Only process. This version 2 of BII03 – Order Only is an updated version of the original BII03 profile. The update is not strictly upward compatible. See the BII document on Versioning and Change Management Policy for definition of upward compatibility in BII workshop documents.

1.1 CEN WS/BII2 profiles

A CEN WS/BII2 profile description is a technical specification describing

- the choreography of the business process covered, i.e. a detailed description of the way the business partners collaborate to play their respective roles and share responsibilities to achieve mutually agreed goals with the support of their respective information systems,
- the electronic business transactions exchanged as part of the business process, with their information requirements, and the sequence in which these transactions are exchanged,
- the business rules governing the execution of that business process, as well as any constraints on information elements used in the transaction data models

The profiles focus on the standardization on the organisational and semantics interoperability levels rather than on syntax or technical interoperability levels. Consequently the business transactions within a profile can be structured based on different message standards/syntax as long it can carry all the necessary information elements.

Although the profile descriptions and transaction data models provided by CEN WS/BII2 are neutral of syntax, the workshop also published specifications of how its data models may be mapped to defined syntaxes. This is done in order provide implementable specifications.

The main focus of the profile description and the associated transaction data models is to address generally expressed business requirements, applicable throughout the European market. Although the profile description is designed to meet generally expressed requirements, it is still the responsibility of the users to ensure that the actual business transactions exchanges meets all the legal, fiscal and commercial requirements relevant to their business.

BII profiles describe common business processes. Stating what business practices are “common” depends on regions and industries that may have their own practices and needs, as well as on work practices within individual companies. Describing what business processes are “common” is therefore a qualitative process. This section sets out to identify what business practices can be listed as “common” and should therefore be supported by the profile. The benchmark is that the common business process is a process that is used by a wide range of companies in different industries and regions or is generally recognized as being relevant for most companies. The method for collecting is through input and expert advice from workshop participants, through existing documentation and expert review.

Each document acts as carrier of information between a seller and a buyer. Some of this information is directly related to its core function but additionally and frequently contains information that is used for related business processes. The nature of which and details depend on the industry and bilateral business relations.

In BII profiles, requirements of the information content of the documents are related to the business process in which the documents are exchanged. The business process in scope of the profile is identified in section 2. In section 3, the business requirements, taken into account, are listed, both on process level and on

document/transaction level. In section 4, these requirements are modelled into UML activity diagrams and into Transaction Information Requirement models. Additional Transaction Business Rules are included in section 4 as well.

The requirement models are syntax neutral. The mapping of the models to available syntaxes is outside the scope of the profiles, but is referenced to in section 5.

1.2 CEN WS/BII2 Post award support

The BII workshop has developed a set of profiles to support interoperability in the pre and post award areas. The scope of BII2 is public procurement but the profiles apply as well to private trade since most public trade involves private suppliers.

The scope of BII2 post award profiles include processes that support communication of catalogues, orders and invoices. These may link with other support processes like transport, inventory and payment, but these other processes are currently out of scope for the workshop.

The set of BII profiles for supporting the post award area are:

	<i>Profile</i>	<i>Processes</i>	<i>Transactions</i>	<i>Version</i>
BII33	Catalogue subscription	Sourcing	Catalogue Subscription Request Catalogue Subscription Response	BII2
BII01	Catalogue only	Sourcing	Catalogue Catalogue Response	BII2
BII17	Multi Party Catalogue	Sourcing	Catalogue Request Catalogue Request Rejection Multiparty Catalogue	BII2
BII02	Catalogue update	Sourcing	Catalogue Item Update Catalogue Price Update Catalogue Update Response	BII2
BII16	Catalogue Deletion	Sourcing	Catalogue Delete Request Catalogue Delete Confirmation	BII2
BII20	Customer Initiated Sourcing	Sourcing	Quote Request Quote Request Rejection Quote	BII1
BII18	Punch Out	Ordering	Quote	BII1
BII03	Order only	Ordering	Order	BII2
BII32	Simple ordering	Ordering	Order Order Response Simple	BII2
BII28	Ordering	Ordering	Order Order Response Simple Counter Offer	BII2
BII27	Advanced ordering	Ordering	Order Order Response Simple Counter Offer Counter Offer Response Simple Order Change	BII2
BII04	Invoice Only	Billing	Invoice	BII2
BII15	Scanned invoice	Billing	Scanned Invoice Scanned Credit Note Rescan Request	BII1
BII09	Customs Bill	Billing	Customs Bill Customs Credit Note Customs Corrective Bill	BII1
BII05	Billing	Billing	Invoice Credit Note Corrective Invoice	BII2
BII23	Invoice only with dispute	Billing	Invoice Invoice Dispute	BII1
BII06	Procurement	Ordering, Billing	Order Order Response Simple Invoice Credit Note Corrective Invoice	BII2
BII07	Procurement with invoice dispute	Ordering, Billing	Order Order Rejection Order Acceptance Invoice Invoice Dispute Credit Note Corrective Invoice	BII1

BII31	Reminder only	Payment	Reminder	BII2
BII21	Statement	Payment	Statement Statement Rejection	BII2
BII08	Billing with dispute and reminder	Billing, Payment	Invoice Invoice Dispute Credit Note Corrective Invoice Reminder	BII1
BII19	Advanced Procurement	Ordering, Billing, Payment	Order Order Rejection Order Acceptance Counter Offer Counter Offer Rejection Counter Offer Acceptance Invoice Invoice Dispute Credit Note Corrective Invoice Reminder	BII1
BII30	Despatch only	Fulfilment	Dispatch Advice	BII2
BII29	Utility statement	Fulfilment	Utility Statement Utility Statement Response	BII2
BII13	Advanced Procurement with Dispatch	Ordering, Fulfilment, Billing, Payment	Order Order Rejection Order Acceptance Counter Offer Counter Offer Acceptance Counter Offer Rejection Dispatch Advice Invoice Invoice Dispute Credit Note Corrective Invoice Reminder	BII1

This profile BII03-Order Only is to be used in environments where only ordering is to be implemented. If orders must be accepted by the Supplier or can be rejected or countered, other profiles apply, such as BII32-Simple Ordering, BII28-Ordering or BII27-Advanced Ordering. If ordering is to be combined with invoicing, profiles BII06, BII17, BII19 or BII13 are to be applied. In cases where invoicing is to be implemented, but not ordering, or when an Invoice does not refer to one Order, profile BII04 Invoice Only or profile BII05 Billing should be used.

1.3 Implementation, conformance and customization

CEN WS/BII2 profiles define the core functionality that is required in order to achieve interoperability for the business processes that are covered. Parties, claiming conformance to a CEN WS/BII2 profile must be capable of:

- Processing all non-optional transactions that are defined in the profile
- Sending all mandatory elements within the transactions
- Processing all elements within the transactions they receive

Parties may agree bilaterally or within certain communities to extend the core set of information elements, or to adapt their cardinality. This extension mechanism is described in the BII Technical Guideline: BII conformance and customization.

In order to implement the profile, the transactions are to be represented in some syntax. Syntax representation is outside the scope of this profile, however, the mapping of the profile transactions to UBL 2.0 and to UN/CEFACT is described in section 5 of this profile. In section 5, reference is made to technical documents such as XML schemas, Schematron files and example messages to support technical implementation.

Implementations of this profile may be validated by means of tools and supporting material, as described in the BII Technical Guideline: BII implementation and use of validation artefacts. More background information and support material can be found on the CEN WS/BII2 website <http://www.cenbii.eu/>.

2 Business environment

2.1 Introduction

The BII03 – Order Only profile describes basic ordering between buyer and seller. It describes a series of activities that govern communication between the parties, data and rules that apply.

The order is sent isolated; previous activities (e.g. Cataloguing) and subsequent activities (e.g. Order Acceptance or Invoicing) are outside the scope of this profile. They may be performed manually. If performed electronically, their implementation is covered by other profiles.

2.2 Objectives

The business objectives for implementing this profile are:

1. The profile is a basis for an EDI agreement between the parties and enables trading partners to communicate without a previous bi-lateral setup or agreements.
2. Is a basis for automated handing of orders in a semi manual environment.
3. Enables customers to set up a standardized acquisition process.
4. SME can offer their trading partners the option of exchanging standardized documents in a uniform way and thereby move all orders into electronic form.
5. Significant saving can be realized by the procuring agency by automating and streamlining in-house process of ordering.
6. Significant saving can be realized by the suppliers by automating and streamlining in-house processing: approval, picking and invoicing can be improved significantly based on increased order quality.
7. Implementation of electronic ordering is a good basis for buyer to enforce a formal process of approval and cost control within his own organization. This may benefit the supplier also by speeding up the payment process (since approval is done on beforehand).

2.3 Scope

This profile supports a process of exchanging orders. It is intended to support transmission of electronic documents for processing in semi automated processes by the receiver. The intended scope for this profile includes:

- B2B and B2G
- Common business processes for cross industry and cross border ordering
- Regional procurement within EU and EEA. The profile is expected to be applicable to other regions following a review of regional requirements.
- Mainly for purchase of goods and services and/or services that can be itemized.

The transaction specified in this profile is intended to be exchanged between the application systems of customers and suppliers. This means that it is expected that customers and suppliers have connected their systems to the internet, and that they have middleware in place to enable them to send and receive the transactions in a secure way, using an agreed syntax.

3 Requirements

3.1 Ordering process requirements

Requirements, taken into account:

- A Buyer submits an Order for delivery of goods or services to a seller.
- An Order may refer to a framework agreement for its terms and conditions; otherwise the Customer terms and conditions apply.
- An Order may contain items (goods or services) with item identifiers or items with free text description.
- The Seller may accept the Order, committing himself to the conditions stated therein by means of an Order Acceptance transaction.
- Alternatively, the Seller may reject the Order by means of an Order Rejection transaction, or counter the Order by means of a Counter Offer.
- The Buyer then may accept the Counter Offer with a Counter Offer Acceptance, thus concluding the contract.
- Alternatively the Buyer may withdraw his order, leaving no residual obligations for Buyer or Seller, or counter the Counter Offer.
- The process ends when one of the parties has rejected or withdrawn the order (incl. all counter proposals exchanged) in which case no contract exists, or when one of the parties has accepted the latest offer, in which case a contract is concluded.

3.1.1 Support of common business processes

This section identifies the major business processes that are frequently supported within ordering and will clarify if and how they are supported in this profile. The ordering process includes the sending of Orders. This profile supports a “common business process” that is used widely or understood as being relevant for most companies. The main activities supported by this profile are:

Structured Ordering

The Order transaction should support the structured ordering of itemised goods or services, using free text or use of identifiers. The information source of the ordered products may be a (paper or electronic) catalogue.

Accounting

The ordering process must support the allocation of budgets, so the value amounts of the ordered products may be stated. The buyer may provide some information that the supplier is required to place on the invoice for aiding and automation of invoice processing.

Invoice Verification

The buyer may provide some information that the supplier is required to place on the invoice for aiding and automation of invoice approval.

VAT reporting

VAT reporting is not a general requirement on orders. The level of support in orders is to

- Enable VAT reporting in invoices by providing VAT number of buyer.
- VAT can be stated as an estimate to enable buyers to state expected value of order. This can be helpful in automated matching of orders and invoices.

Payment

Information about pre-payment or arrangement of payment are not considered core functionality in order and are therefore not supported.

Transport and delivery

Only limited support is in scope for transport related information, but it is recognized that the buyer needs to be able to provide some information about requested delivery location (by use of identifiers or full textual description).

Inventory

Supporting inventory management is not in scope, but structured orders based on catalogues can be used to automate picking at supplier warehouses.

3.2 Ordering information requirements

3.2.1 Order Submission transaction business requirements

General requirements

ID	Requirement
tbr01-001	To control the validation and processing of an order; information that identifies the data model customization used and the business process that the order is part of
tbr01-002	An order must provide information about its creation date and validity
tbr01-003	To provide flexibility in ordering an order must provide for free text notes on document level as well as on individual order lines.
tbr01-004	An order must provide for information about the value of items ordered and what prices, charges and totals (including estimate of VAT) he expects to pay in a way that can be matched against an invoice.
tbr01-005	The order must enable the buyer to send information that can be reported back in a resulting invoice with the purpose of automating the processing of the invoice.
tbr01-006	The order must enable the buyer to reference to contracts and documents that are relevant to prices and terms, including terms of delivery.
tbr01-007	The order must enable the buyer to provide specific details for the item or the variant of the item that is being order such as features, diagrams or specifications. attachment?
tbr01-030	The order must support information needed to specify estimated allowance and charges on document level that apply to the order as a whole.
tbr01-031	All amounts in the Order must be stated in the same currency.
tbr01-032	Order should only contain non-negative prices and positive quantities

Parties

ID	Requirement
tbr01-010	An electronic order must provide for the electronic address from which the buyer sent the message and the electronic address to which it should be sent.
tbr01-011	For supporting reverse charge VAT invoicing the order must provide for the buyers VAT number and the buyer's legal registration ID in order to enable the seller to issue legally valid invoices.
tbr01-013	An order must provide for contact information for the buyer and the seller including structured name, phone, fax and email and job title.
tbr01-009	An order must provide for identifying the buyer and seller with name and address as well as identifiers, including the sellers' legal registration ID. Use of published identifiers is common for identifying parties. Parties should be free to choose the identification scheme.
tbr01-020	An order must provide for contact details of the party who originated the order as a whole or for individual order lines (i.e. the end user of the items).
tbr01-037	The Order should provide for the invoice address of the Buyer.

Delivery

ID	Requirement
tbr01-021	An order must provide for details about delivery location (address and ID), some basic delivery terms, delivery time and contact person for a delivery of an order.
tbr01-022	An order must provide for information about the dates before and/or after which the order as whole or individual order lines must be delivered.
tbr01-033	An order line must provide for indication on whether the buyer accepts partial deliveries of that line.

ID	Requirement
tbr01-038	Basic delivery terms for transport <ul style="list-style-type: none">➤ Transport location➤ Transport terms

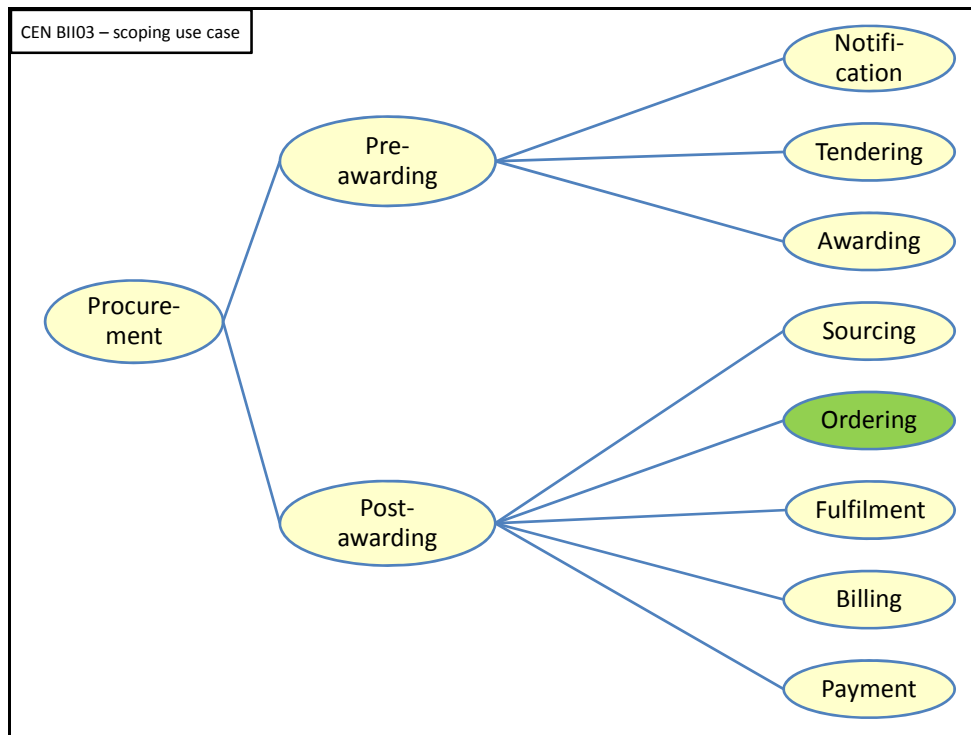
Line Item

ID	Requirement
tbr01-025	Each line in an order must be clearly identified to enable positive referencing from other documents.
tbr01-027	An order must provide for information about the final price that the buyer expects to pay. This makes it possible for the seller to verify against his price lists and contracts. An order must provide for giving the base quantity to which the price applies.
tbr01-028	An order line must provide for information about the quantity ordered and its unit of measure.
tbr01-029	An order line must provide for detailed identification of the ordered item or variant of the item including name, identifiers, description as well as the values for different item properties, diagrams and specifications.
tbr01-034	An order line must provide for supplier identifiers and standard identifiers for products
tbr01-035	It must be possible to state informative price discounts.

4 Profile detailed description

4.1 Business processes in scope

Procurement is a complex domain with several key processes, some of which are illustrated in the following figure.



The Order Only profile covers the business processes as highlighted in the above figure.

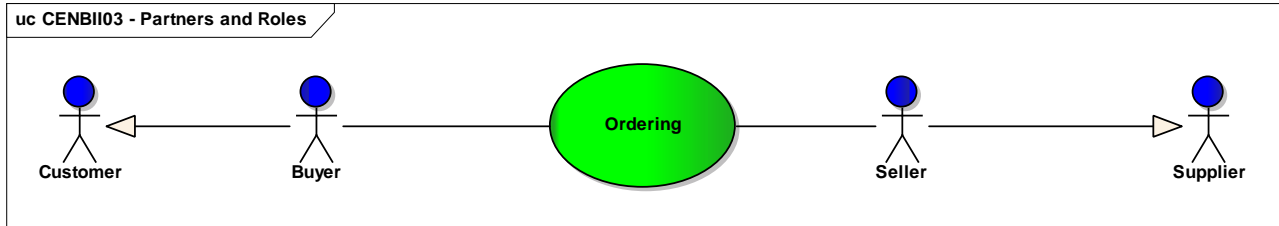
4.2 Roles involved

The following business partners participate in this profile, acting in the roles as defined below.

Business partners	Description
Customer	The customer is the legal person or organization who is in demand of a product or service. Examples of customer roles: buyer, consignee, debtor, contracting authority.
Supplier	The supplier is the legal person or organization who provides a product or service. Examples of supplier roles: seller, consignor, creditor, economic operator.

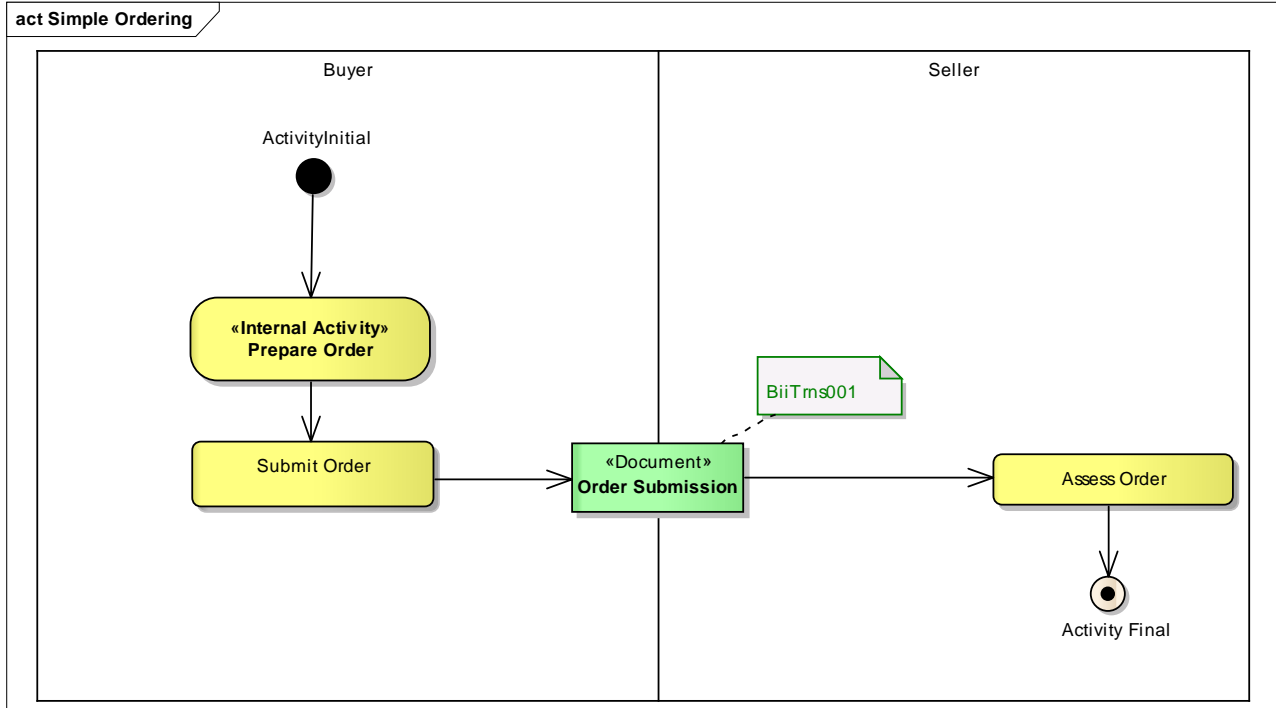
Role/actor	Description
Buyer	The buyer is the legal person or organization acting on behalf of the customer and who buys or purchases the goods or services.
Seller	The seller is the legal person or organization acting on behalf of the supplier and who sells goods or services to the customer.

The following diagram links the business processes to the roles performed by the Business Partners.



4.3 Ordering Business Process

The following diagram shows the choreography of the business process implemented by the profile. The choreography of business collaborations defines the sequence of interactions when the profile is run within its context.



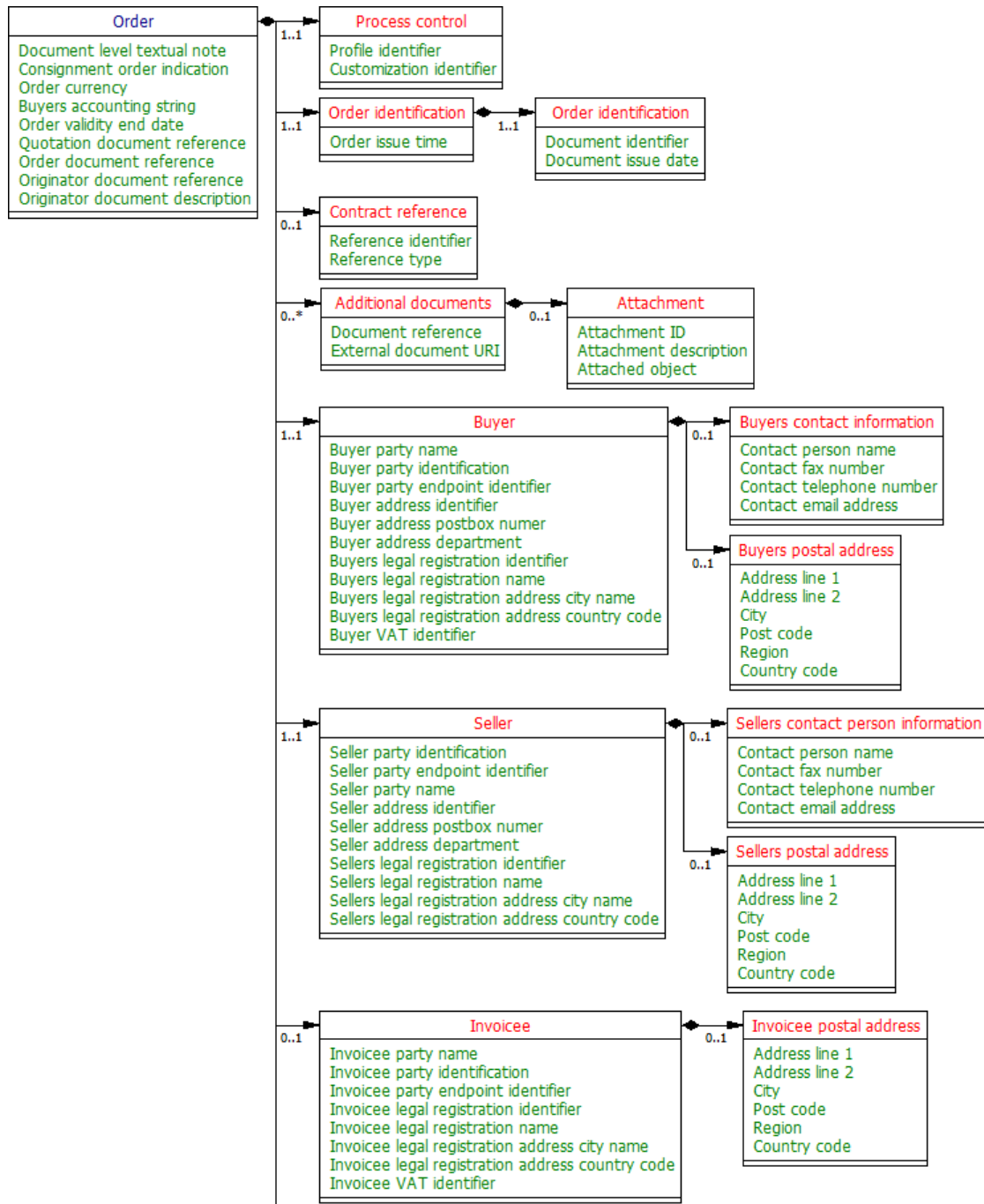
Categories	Description and Values
Description	The Customer creates an electronic order and sends it to the Supplier. Any supplier response is out of scope of the profile.
Pre-conditions	The Customer and the Supplier have identified each other. The Supplier has agreed to accept electronic orders. Possibly Customer and Supplier have concluded a contract with general conditions and/or exchanged a Catalogue with product information and pricing.
Post-conditions	An Order has been received by the Supplier.
Exceptions	1. Order acceptance and rejection is handled externally. 2. Fulfilment and billing processes are handled externally.

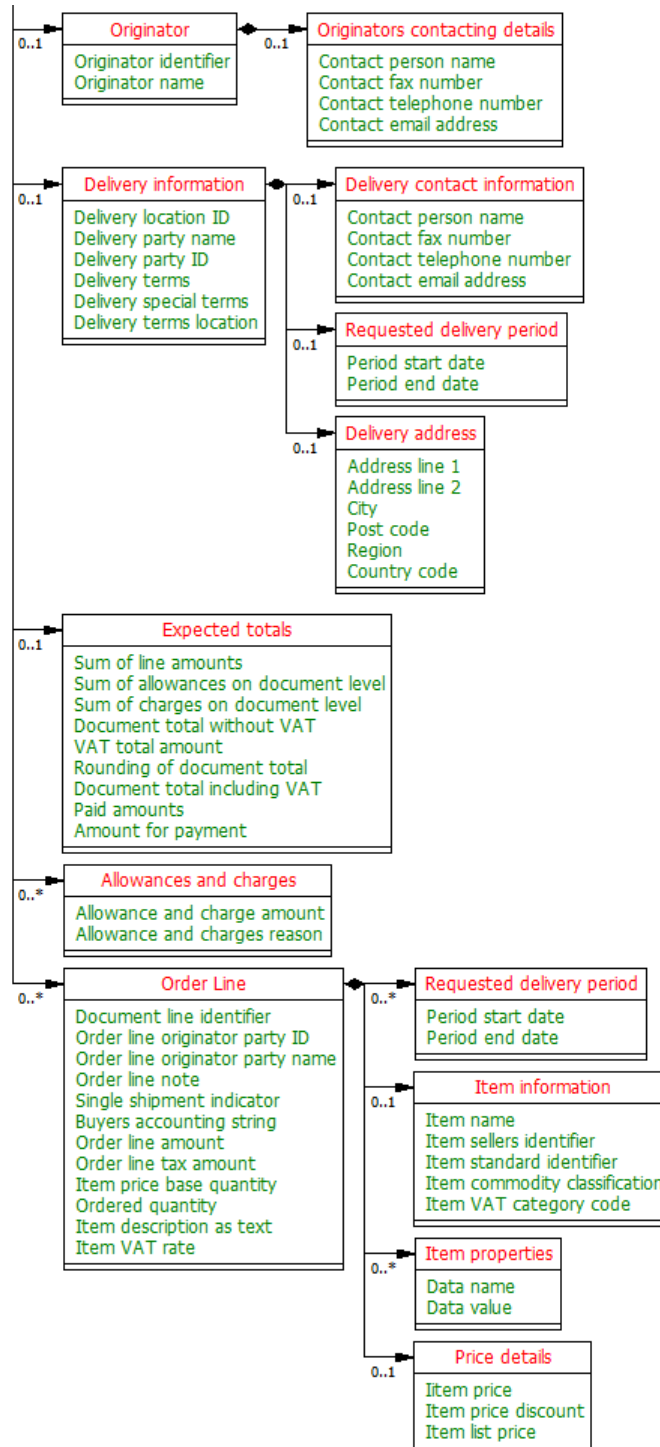
4.4 Transaction information requirements

4.4.1 Order Submission Transaction

Categories	Description and Values
Identifier	BiiTrns001
Description	A Buyer sends an order to a Seller for any goods or services
Partner Types	Customer Supplier
Authorized Roles	Buyer Seller
Legal Implications	With submitting an order the Buyer commits himself to the general or contractual terms of trade that apply.
Initial Event	Send Order Submission.
Terminal event	Assess Order
Constraints	See business rules below

4.4.1.1 Order Submission Transaction Information Requirements Model





4.4.1.2 Order Submission Transaction information Requirements

InfRqID	Crd	Tree and Business term	Usage	Data Type	ReqID	Note
		Order				
tir01-006	0..1	Document level textual note	Free form text applying to the Order. This element may contain notes or any other similar information that is not contained explicitly in another structure. Textual note.	BiiDT::Text	tbr01-003	
tir01-153	0..1	Consignment order indication	Purchase order or consignment order. If true order is consignment order	BiiDT::Undefined		
tir01-007	0..1	Order currency	The default currency for the Order.	BiiDT::Code	tbr01-004	
tir01-008	0..1	Buyers accounting string	Used by the buyer to specify a reference that should be repeated in e.g. invoice to enable the buyer to automatically book e.g. to the right project, or account.	BiiDT::Text	tbr01-005	
tir01-009	0..1	Order validity end date	The end date for when the order is valid. The end date for the time period within which the seller must respond.	BiiDT::Date	tbr01-002	
tir01-010	0..1	Quotation document reference	A requirement to give a unique reference to the quotation that is the base for the order.	BiiDT::Undefined	tbr01-006	
tir01-011	0..1	Order document reference	Used to reference the initial order that was rejected and a new order is issued.	BiiDT::Undefined	tbr01-006	
tir01-012	0..1	Originator document reference	An associative reference to Originator Document. To be able to give a reference to the internal requisition on the buyer site on which the order is based.	BiiDT::Undefined	tbr01-006	
tir01-013	0..1	Originator document description	Originator document description.	BiiDT::Undefined	tbr01-006	
	1..1	Process control	Information about the specification that apply to the transaction.	CENBII common structures::Process control		
tir01-002	1..1	Profile identifier	Identifies the BII profile or business process context in which the transaction appears.	BiiDT::Code	tbr00-001 tbr01-001	
tir01-001	1..1	Customization identifier	Identifies the specification of content and rules that apply to the transaction.	BiiDT::Code	tbr00-002 tbr01-001	
	1..1	Order identification		Main::Order identification		
tir01-005	0..1	Order issue time	The time assigned by the Buyer on which the Order was issued. The time when the order is issued.	BiiDT::Time	tbr01-002	
	1..1	Order identification	Information that positively identifies the transaction so that it can be positively reference or looked up.	CENBII common structures::Document identification	tbr01-001	
tir01-003	1..1	Document identifier	An transaction instance must contain an identifier. The identifier enables referencing the document instance for various purposes including referencing between transactions that are part of the same process. An identifier for the Order assigned by the Buyer.	BiiDT::Undefined	tbr01-001	
tir01-004	1..1	Document issue date	The date on which the transaction instance was issued. The date assigned by the Buyer on which the Order was issued. The date when the order is issued	BiiDT::Date	tbr01-002	

InfRqID	Crd	Tree and Business term	Usage	Data Type	ReqID	Note
	0..1	Contract reference	A reference to a document or other source that can be positively identified. Identifies the Contract. An association to Contract. Reference to the contract that governs the order. Such as a framework agreement, financial terms contract etc.	CENBII common structures::Reference	tbr01-006	
tir01-019	0..1	Reference identifier	Positive identification of the reference such as a unique identifier.	BiiDT::Undefined	tbr01-006	
tir01-020	0..1	Reference type	The short description of what is reference such as contract type, document type , meter etc. The type of Contract, expressed as text.	BiiDT::Undefined	tbr01-006	
	0..n	Additional documents	An associative reference to Additional Document. Reference to any document that has relevance to the order such as drawings, technical specifications.	Main::Additional documents	tbr01-006	
tir01-154	0..1	Document reference	A reference to a document.	BiiDT::Text	tbr01-006	
tir01-018	0..1	External document URI	The Uniform Resource Identifier (URI) that identifies where the external document is located.	BiiDT::Undefined	tbr01-006	
	0..1	Attachment	Attached documents	CENBII common structures:: Attachment		
tir01-015	0..1	Attachment ID	A positive identification of the relevant document, such as a unique identifier.	BiiDT::Undefined	tbr01-006	
tir01-016	0..1	Attachment description	A short description of the document type.	BiiDT::Text	tbr01-006	
tir01-017	0..1	Attached object	The attached document embedded as binary object.	BiiDT::Binary Object	tbr01-006	
	1..1	Buyer	The party who places the order with the intent of buying the listed items according to the stated terms.	Main::Buyer		
tir01-023	0..1	Buyer party name	The name of the party who orders the listed goods.	BiiDT::Text	tbr01-009	
tir01-022	0..1	Buyer party identification	An identification for the buyer party.	BiiDT::Undefined	tbr01-009	
tir01-021	0..1	Buyer party endpoint identifier	Identifies the end point of the routing service.	BiiDT::Identifier	tbr01-010	
tir01-029	0..1	Buyer address identifier	An identifier for a specific address within a scheme of registered addresses.	BiiDT::Identifier	tbr01-009	
tir01-025	0..1	Buyer address postbox number	A post office box number.	BiiDT::Undefined	tbr01-009	
tir01-028	0..1	Buyer address department	An addressable department of an organization.	BiiDT::Undefined	tbr01-009	
tir01-043	0..1	Buyers legal registration identifier	Identifies a company as registered with the company registration scheme.	BiiDT::Identifier	tbr01-012	
tir01-044	0..1	Buyers legal registration name	The official name of the party as registered with the relevant fiscal authority.	BiiDT::Text	tbr01-012	
tir01-045	0..1	Buyers legal registration address city name	Associates with the registered address of the party within a Corporate Registration Scheme. The name of a city, town, or village.	BiiDT::Undefined	tbr01-012	
tir01-046	0..1	Buyers legal registration address country code	Buyers legal registration address country ID	BiiDT::Code	tbr01-012	
tir01-034	0..1	Buyer VAT identifier	Identifies a company as registered with the company registration scheme.	BiiDT::Identifier	tbr01-011	

InfRqID	Crd	Tree and Business term	Usage	Data Type	ReqID	Note
	0..1	Buyers contact information	Used to provide contacting information for a party in general or a person. The buyers contact that can be consulted regarding the order.	CENBII common structures::Contacting details		
tir01-050	0..1	Contact person name	The name of the contact person.	BiiDT::Text	tbr01-014	
tir01-048	0..1	Contact fax number	A fax number for the contact persons.	BiiDT::Undefined	tbr01-013	
tir01-047	0..1	Contact telephone number	A phone number for the contact person. If the person has a direct number, this is that number.	BiiDT::Undefined	tbr01-013	
tir01-049	0..1	Contact email address	The e-mail address for the contact person. If the person has a direct e-mail this is that email.	BiiDT::Undefined	tbr01-013	
	0..1	Buyers postal address	Address information.	CENBII common structures::Postal address	tbr01-009	
tir01-032	0..1	Address line 1	The main address line in a postal address usually the street name and number.	BiiDT::Undefined	tbr01-009	
tir01-027	0..1	Address line 2	An additional address line in a postal address that can be used to give further details supplementing the main line. Common use are secondary house number in a complex or in a building.	BiiDT::Undefined	tbr01-009	
tir01-031	0..1	City	The common name of the city where the postal address is. The name is written in full rather than as a code.	BiiDT::Undefined	tbr01-009	
tir01-024	0..1	Post code	The identifier for an addressable group of properties according to the relevant national postal service, such as a ZIP code or Post Code.	BiiDT::Undefined	tbr01-009	
tir01-141	0..1	Region	For specifying a region, county, state, province etc. within a country by using text.	BiiDT::Undefined	tbr01-009	
tir01-033	0..1	Country code	The country where the address is. The country should always be given by using ISO code 3166 alpha 2	BiiDT::Code	tbr01-009	
	1..1	Seller	A seller is a party to whom the buyer sends an order for purchase with the purpose of buying the listed items.	Main::Seller		
tir01-059	0..1	Seller party identification	Identifies a party.	BiiDT::Undefined	tbr01-009	
tir01-058	0..1	Seller party endpoint identifier	Identifies the end point of the routing service, e.g., EAN Location Number, GLN.	BiiDT::Text	tbr01-010	
tir01-060	0..1	Seller party name	The name of the party.	BiiDT::Text	tbr01-017	
tir01-061	0..1	Seller address identifier	An identifier for a specific address within a scheme of registered addresses.	BiiDT::Identifier	tbr01-017	
tir01-062	0..1	Seller address postbox number	A post office box number.	BiiDT::Undefined	tbr01-017	
tir01-066	0..1	Seller address department	An addressable department of an organization.	BiiDT::Undefined	tbr01-017	
tir01-070	0..1	Sellers legal registration identifier	Identifies a company as registered with the company registration scheme.	BiiDT::Identifier	tbr01-018	
tir01-071	0..1	Sellers legal registration name	The official name of the party as registered with the relevant fiscal authority.	BiiDT::Text	tbr01-018	
tir01-072	0..1	Sellers legal registration address city name	Associates with the registered address of the party within a Corporate	BiiDT::Undefined	tbr01-018	

InfRqID	Crđ	Tree and Business term	Usage	Data Type	ReqID	Note
			Registration Scheme. The name of a city, town, or village.			
tir01-073	0..1	Sellers legal registration address country code	Buyers legal registration address country ID	BiiDT::Code	tbr01-018	
	0..1	Sellers contact person information	Used to provide contacting information for a party in general or a person.	CENBII common structures::Contacting details		
tir01-074	0..1	Contact person name	The name of the contact person.	BiiDT::Text	tbr01-014	
tir01-075	0..1	Contact fax number	A fax number for the contact persons.	BiiDT::Undefined	tbr01-014	
tir01-077	0..1	Contact telephone number	A phone number for the contact person. If the person has a direct number, this is that number.	BiiDT::Undefined	tbr01-014	
tir01-076	0..1	Contact email address	The e-mail address for the contact person. If the person has a direct e-mail this is that email.	BiiDT::Undefined	tbr01-014	
	0..1	Sellers postal address	Address information.	CENBII common structures::Postal address		
tir01-063	0..1	Address line 1	The main address line in a postal address usually the street name and number.	BiiDT::Undefined	tbr01-017	
tir01-064	0..1	Address line 2	An additional address line in a postal address that can be used to give further details supplementing the main line. Common use are secondary house number in a complex or in a building.	BiiDT::Undefined	tbr01-017	
tir01-065	0..1	City	The common name of the city where the postal address is. The name is written in full rather than as a code.	BiiDT::Undefined	tbr01-017	
tir01-068	0..1	Post code	The identifier for an addressable group of properties according to the relevant national postal service, such as a ZIP code or Post Code.	BiiDT::Undefined	tbr01-017	
tir01-142	0..1	Region	For specifying a region, county, state, province etc. within a country by using text.	BiiDT::Undefined	tbr01-017	
tir01-069	0..1	Country code	The country where the address is. The country should always be given by using ISO code 3166 alpha 2	BiiDT::Code	tbr01-017	
	0..1	Invoicee		Main::Invoicee		
tir01-155	0..1	Invoicee party name	The name of the party who orders the listed goods.	BiiDT::Text		
tir01-156	0..1	Invoicee party identification	An identification for the buyer party.	BiiDT::Undefined		
tir01-157	0..1	Invoicee party endpoint identifier	Identifies the end point of the routing service.	BiiDT::Identifier		
tir01-158	0..1	Invoicee legal registration identifier	Identifies a company as registered with the company registration scheme.	BiiDT::Identifier		
tir01-159	0..1	Invoicee legal registration name	The official name of the party as registered with the relevant fiscal authority.	BiiDT::Text		
tir01-160	0..1	Invoicee legal registration address city name	Associates with the registered address of the party within a Corporate Registration Scheme. The name of a city, town, or village.	BiiDT::Undefined		
tir01-161	0..1	Invoicee legal registration address country code	Buyers legal registration address country ID	BiiDT::Code		
tir01-162	0..1	Invoicee VAT identifier	Identifies a company as registered with the company registration scheme.	BiiDT::Identifier		

InfRqID	Crd	Tree and Business term	Usage	Data Type	ReqID	Note
	0..1	Invoicee postal address	Address information.	CENBII common structures::Postal address		
tir01-163	0..1	Address line 1	The main address line in a postal address usually the street name and number.	BiiDT::Undefined		
tir01-164	0..1	Address line 2	An additional address line in a postal address that can be used to give further details supplementing the main line. Common use are secondary house number in a complex or in a building.	BiiDT::Undefined		
tir01-165	0..1	City	The common name of the city where the postal address is. The name is written in full rather than as a code.	BiiDT::Undefined		
tir01-166	0..1	Post code	The identifier for an addressable group of properties according to the relevant national postal service, such as a ZIP code or Post Code.	BiiDT::Undefined		
tir01-167	0..1	Region	For specifying a region, county, state, province etc. within a country by using text.	BiiDT::Undefined		
tir01-168	0..1	Country code	The country where the address is. The country should always be given by using ISO code 3166 alpha 2	BiiDT::Code		
	0..1	Originator	The party on whos behalf the purchase is made, i.e. the end user.	Main::Originator	tbr01-020	
tir01-081	0..1	Originator identifier	Identifies a party.	BiiDT::Undefined	tbr01-0	
tir01-082	0..1	Originator name	The name of the party.	BiiDT::Text	tbr01-0	
	0..1	Originators contacting details	Used to provide contacting information for a party in general or a person.	CENBII common structures::Contacting details		
tir01-086	0..1	Contact person name	The name of the contact person.	BiiDT::Text	tbr01-020	
tir01-084	0..1	Contact fax number	A fax number for the contact persons.	BiiDT::Undefined	tbr01-020	
tir01-083	0..1	Contact telephone number	A phone number for the contact person. If the person has a direct number, this is that number.	BiiDT::Undefined	tbr01-020	
tir01-085	0..1	Contact email address	The e-mail address for the contact person. If the person has a direct e-mail this is that email.	BiiDT::Undefined	tbr01-020	
	0..1	Delivery information	Information realting to the physical delivery of the ordered goods.	Main::Delivery information		
tir01-169	0..1	Delivery location ID		BiiDT::Identifier		
tir01-102	0..1	Delivery party name		BiiDT::Text	tbr01-0	
tir01-101	0..n	Delivery party ID		BiiDT::Text	tbr01-0	
tir01-107	0..1	Delivery terms	The ability for the buyer to specify what shipping terms should apply the delivery of the order.	BiiDT::Text	tbr01-023	
tir01-108	0..1	Delivery special terms	A description of special conditions relating to the Delivery Terms.	BiiDT::Text	tbr01-023	
tir01-109	0..1	Delivery terms location	An association to Location, e.g., a port. The unique identifier for the location, e.g., the EAN Location Number, GLN.	BiiDT::Text	tbr01-023	
	0..1	Delivery contact information	Used to provide contacting information for a party in general or a person.	CENBII common structures::Contacting		

InfRqID	Crd	Tree and Business term	Usage	Data Type	ReqID	Note
				details		
tir01-103	0..1	Contact person name	The name of the contact person.	BiiDT::Text	tbr01-0	
tir01-105	0..1	Contact fax number	A fax number for the contact persons.	BiiDT::Undefined		
tir01-104	0..1	Contact telephone number	A phone number for the contact person. If the person has a direct number, this is that number.	BiiDT::Undefined		
tir01-106	0..1	Contact email address	The e-mail address for the contact person. If the person has a direct e-mail this is that email.	BiiDT::Undefined		
	0..1	Requested delivery period	Dates that describe a period that has relevance in the context of the transaction. The requested Period for Delivery. Use only if the same Requested Delivery Period applies to all Order Lines.	CENBII common structures::Date periods	tbr01-023	
tir01-099	1..1	Period start date	The date on which the period starts. The start dates counts as part of the period.	BiiDT::Date	tbr01-023	
tir01-100	1..1	Period end date	The date on which the period ends. The end date counts as part of the period.	BiiDT::Date	tbr01-023	
	0..1	Delivery address	Address information.	CENBII common structures::Postal address	tbr01-021	
tir01-092	0..1	Address line 1	The main address line in a postal address usually the street name and number.	BiiDT::Undefined	tbr01-021	
tir01-093	0..1	Address line 2	An additional address line in a postal address that can be used to give further details supplementing the main line. Common use are secondary house number in a complex or in a building.	BiiDT::Undefined	tbr01-021	
tir01-096	0..1	City	The common name of the city where the postal address is. The name is written in full rather than as a code.	BiiDT::Undefined	tbr01-021	
tir01-097	0..1	Post code	The identifier for an addressable group of properties according to the relevant national postal service, such as a ZIP code or Post Code.	BiiDT::Undefined	tbr01-021	
tir01-144	0..1	Region	For specifying a region, county, state, province etc. within a country by using text.	BiiDT::Undefined	tbr01-021	
tir01-098	0..1	Country code	The country where the address is. The country should always be given by using ISO code 3166 alpha 2	BiiDT::Code	tbr01-021	
	0..1	Expected totals	The calculated totals of the document. The amounts that the buyer expects the seller to charge for the ordered goods.	CENBII common structures::Document totals	tbr01-024	
tir01-115	1..1	Sum of line amounts	Sum of line amounts in the document. The total of Line Extension Amounts net of tax and settlement discounts, but inclusive of any applicable rounding amount.	BiiDT::Numeric	tbr01-024	
tir01-116	0..1	Sum of allowances on document level	Sum of all allowances on header level in the document. Allowances on line level are included in the line amount and summed up into the "sum of line amounts"	BiiDT::Numeric	tbr01-024	



InfRqID	Crđ	Tree and Business term	Usage	Data Type	ReqID	Note
tir01-117	0..1	Sum of charges on document level	Sum of all charge on header level in the document. Charges on line level are included in the line amount and summed up into the "sum of line amounts"	BiiDT::Numeric	tbr01-024	
tir01-145	1..1	Document total without VAT	The "Sum of line amounts" plus "sum of allowances on document level" plus "sum of charges on document level".	BiiDT::Numeric		
tir01-114	0..1	VAT total amount	The total VAT amount that is "added to the document total w/o VAT". This is the sum of all VAT subcategory amounts. An association to the total tax amount of the Order (as calculated by the Buyer). The expected Tax Total in the corresponding invoice.. The total tax amount for particular tax scheme e.g. VAT; the sum of each of the tax subtotals for each tax category within the tax scheme. Sum of line tax amounts. An association to the total tax amount of the Order (as calculated by the Buyer). The expected Tax Total in the corresponding invoice.	BiiDT::Numeric	tbr01-024	
tir01-146	0..1	Rounding of document total	Any rounding of the "Document total including VAT"	BiiDT::Numeric		
tir01-147	1..1	Document total including VAT	The total value including VAT	BiiDT::Numeric		
tir01-148	0..1	Paid amounts	Any amounts that have been paid a-priori.	BiiDT::Numeric		
tir01-118	1..1	Amount for payment	The amount that is expected to be paid based on the document. This amount is the "Document total including VAT" less the "paid amounts" that have been paid a-priori. The total amount to be paid. Estimated total amount of order including VAT	BiiDT::Numeric	tbr01-024	
	0..n	Allowances and charges	Allowance or charges that are added/deducted to a given amount Allowances and charges that the order expects the seller to apply to the ordered goods.	CENBII common structures:: Allowances and charges	tbr01-024	
tir01-113	1..1	Allowance and charge amount	The net amount of the allowance or the charge excluding VAT.	BiiDT::Numeric	tbr-024	
tir01-112	1..1	Allowance and charges reason	A textual reason for the allowance or the charge. Can also be its name.	BiiDT::Undefined	tbr01-024	
	0..n	Order Line		Main::Order Line		
tir01-120	1..1	Document line identifier	Identifies the Line Item assigned by the buyer.	BiiDT::Undefined	tbr01-0	
tir01-121	0..1	Order line originator party ID	The party who originated Order.	BiiDT::Undefined	tbr01-020	
tir01-122	0..1	Order line originator party name	The party who originated Order.	BiiDT::Text	tbr01-020	
tir01-123	0..1	Order line note	Free-form text applying to the Order Line. This element may contain notes or any other similar information that is not contained explicitly in another structure. Is to capture any free form description related to the order line as a whole.	BiiDT::Text	tbr01-003	
tir01-124	0..1	Single shipment indicator	Indicates if the line items must be delivered in a single shipment.	BiiDT::Indicator	tbr01-026	Change name to "Partial Delivery Allowed Indicator"



InfRqID	Crđ	Tree and Business term	Usage	Data Type	ReqID	Note
tir01-125	0..1	Buyers accounting string	The buyer's accounting information applied to the Line Item, expressed as text.	BiiDT::Undefined	tbr01-0	
tir01-128	0..1	Order line amount	The total amount for the Line Item, including Allowance Charges but net of taxes. The expected line amount excluding VAT but inclusive of other charges, allowances and taxes.	BiiDT::Undefined	tbr01-024	
tir01-129	0..1	Order line tax amount	The total tax amount for the Line Item. The total amounts of taxes on the line.	BiiDT::Undefined	tbr01-024	
tir01-131	0..1	Item price base quantity	The actual quantity to which the price applies.	BiiDT::Undefined	tbr01-027	
tir01-132	0..1	Ordered quantity	The quantity of Items for the Line Item. The quantity for the order line.	BiiDT::Undefined	tbr01-028	
tir01-133	0..1	Item description as text	Free-form field that can be used to give a text description of the item. A detailed description of the item. Use one description per language. Test text for capturing notes	BiiDT::Undefined	tbr01-029	
tir01-170	0..1	Item VAT rate		BiiDT::Text		
	0..n	Requested delivery period	Dates that describe a period that has relevance in the context of the transaction.	CENBII common structures::Date periods		
tir01-126	1..1	Period start date	The date on which the period starts. The start dates counts as part of the period.	BiiDT::Date	tbr01-022	
tir01-127	1..1	Period end date	The date on which the period ends. The end date counts as part of the period.	BiiDT::Date	tbr01-022	
	0..1	Item information	Information about an item.	CENBII common structures::Item information		
tir01-134	0..1	Item name	A short name for an item. A short name optionally given to an item, such as a name from a Catalogue, as distinct from a description. A short name for the item.	BiiDT::Text	tbr01-029	
tir01-135	0..1	Item sellers identifier	The sellers identifier for the item. Associates the item with its identification according to the seller's system. The sellers ID for the item.	BiiDT::Undefined	tbr01-029	
tir01-136	0..1	Item standard identifier	A item identifier based on a registered schema. Associates the item with its identification according to a standard system. Standardized ID for the item	BiiDT::Identifier	tbr01-029	
tir01-149	0..2	Item commodity classification	A classification code for classifying the item by its type or nature.	BiiDT::Code	tbr01-0	
tir01-150	0..1	Item VAT category code	The VAT code that indicates what VAT details apply to the item. The VAT details are given on the document level.	BiiDT::Undefined	tbr01-0	
	0..n	Item properties	Description of additional data. Any properties of the ordered item that can not be specified in other elements.	CENBII common structures::Data value pairs		
tir01-138	1..1	Data name	The name of the data. The name of the data must be sufficiently descriptive to define the value. E.g. by including the unit when relevant.	BiiDT::Undefined	tbr01-029	



InfReqID	Crd	Tree and Business term	Usage	Data Type	ReqID	Note
tir01-139	1..1	Data value	The name of the item property. The value of the data. The item property value.	BiiDT::Undefined	tbr01-029	
	0..1	Price details	The price of an item and its discounts.	CENBII common structures::Price details		
tir01-130	0..1	Item price	The net price of an item including discounts or surcharges that apply to the price. Although price is an optional element in an order it recommended as best practice to either state the price or provide reference to an appropriate source from which the price can be identified such as a contract, catalogue or a quote.. The price amount. The net price of the item including all allowances, charges and taxes but excluding VAT.	BiiDT::Numeric	tbr01-0 tbr01-027	
tir01-151	0..1	Item price discount	The total discount subtracted from the gross price to reach the net price.	BiiDT::Numeric	tbr01-0	
tir01-152	0..1	Item list price	The gross price of the item before subtracting discounts. E.g. list price.	BiiDT::Numeric		

4.4.1.3 Order Submission Transaction Business Rules

Facts

RuleID	rulenote	target	errorlevel	source	ReqID
BII2-T01-R005	An order MUST provide information about its validity end date	Order	fatal	T01	tbr01-002
BII2-T01-R009	An order MUST be stated in a single currency	Order	fatal	T01	tbr01-031
BII2-T01-R010	Each order line ordered quantity MUST not be negative	Order Line	fatal	T01	tbr01-032
BII2-T01-R011	Each order line item net price MUST not be negative	Item Price	fatal	T01	tbr01-032
BII2-T01-R012	Expected total amount for payment MUST NOT be negative, if expected total amount for payment is provided	Expected totals	fatal	T01	tbr01-032
BII2-T01-R013	Expected total sum of line amounts MUST NOT be negative, if expected total sum of line amounts is provided	Expected totals	fatal	T01	tbr01-032
BII2-T01-R021	An order MUST have the buyer party name or a buyer party identifier	Order	fatal	T01	tbr01-013
BII2-T01-R022	An order MUST have the seller party name or a seller party identifier	Order	fatal	T01	tbr01-013
BII2-T01-R023	A sellers postal address SHOULD have at least all of the following: - Address line - City - Post code - Country code	Seller	warning	T01	tbr01-013
BII2-T01-R024	A buyers postal address SHOULD have at least all of the following: - Address line - City - Post code - Country code	Buyer	warning	T01	tbr01-013
BII2-T01-R025	A delivery address SHOULD have at least and address identifier or all of the following: - City - Post code - Country code	Delivery Address	warning	T01	tbr01-021
BII2-T01-R026	An item standard Identifier SHOULD have an identification schema (e.g. GTIN)	Item	warning	T01	tbr01-034
BII2-T01-R027	An item commodity classification SHOULD have a code list identifier (e.g. CPV or UNSPSC)	Item	warning	T01	tbr01-034
BII2-T01-R029	Each order line SHOULD have an ordered quantity	Order Line	warning	T01	tbr01-028
BII2-T01-R030	Each order line ordered quantity MUST have an associated unit of measure	Quantity	fatal	T01	tbr01-028
BII2-T01-R031	Each order line MUST have an item identifier and/or an item name	Order Line	fatal	T01	tbr01-029

Integrity constraints

RuleID	rulenote	target	errorlevel	source	ReqID
BII2-T01-R001	An order MUST have a customization identifier	Order	fatal	T01	tbr01-001
BII2-T01-R002	An order MUST have a profile identifier	Order	fatal	T01	tbr01-001
BII2-T01-R003	Each order line MUST have a document line identifier that is unique within the order	Order Line	fatal	T01	tbr01-025
BII2-T01-R004	An order MUST have a document issue date	Order	fatal	T01	tbr01-002
BII2-T01-R006	An order MUST have a document identifier	Order	fatal	T01	tbr01-005
BII2-T01-R007	Allowances MUST have an allowance reason	Allowance	fatal	T01	tbr01-008
BII2-T01-R008	Charges MUST have a charge reason	Charge	fatal	T01	tbr01-008
BII2-T01-R019	Each item property MUST have a data name, if item property is provided	Item property	fatal	T01	tbr01-029
BII2-T01-R020	Each item property MUST have a data value, if item property is provided	Item property	fatal	T01	tbr01-029

Calculation rules

RuleID	rulenote	target	errorlevel	source	ReqID
BII2-T01-R014	Expected total sum of line amounts MUST equal the sum of the order line amounts at order line level, if expected total sum of line amounts is provided	Expected totals	fatal	T01	tbr01-027
BII2-T01-R015	Expected total sum of allowance at document level MUST be equal to the sum of allowance amounts at document level, if expected total sum of allowance at document level is provided	Expected totals	fatal	T01	tbr01-027
BII2-T01-R016	Expected total sum of charges at document level MUST be equal to the sum of charges at document level, if expected total sum of charges at document level is provided	Expected totals	fatal	T01	tbr01-027
BII2-T01-R017	Expected total amount for payment MUST be equal to the sum of line amounts minus sum of allowances at document level plus sum of charges at document level and VAT total amount, if expected total amount for payment is provided	Expected totals	fatal	T01	tbr01-027
BII2-T01-R018	VAT total amount SHOULD be the sum of order line tax amounts, if order line tax amounts are provided	Tax Total	warning	T01	tbr01-027

5 Implementation

The following documents define the binding of the transactions to various syntaxes:

Transaction	Syntax	Binding document
BiiTrns001	UN/CEFACT D11A	BiiTrns01-SB-Cefact.rtf
BiiTrns001	UBL 2.1	BiiTrns01-SB-UBL.rtf

These documents have been annexed to this profile.

Validation tools, such as Schematron files, are available on the BII2 web site: <http://www.cenbii.eu/>

6 References

6.1 General references relevant for all BII profiles

External documents

- UN/CEFACT Modelling Methodology (available at <http://www.untmg.org/specifications/>)
- UML (Unified Modelling Language), version 2.0 (available at <http://www.omg.org/spec/UML/2.0/>)

Related publications from CEN/ISSS WS/BII:

- CEN CWA 16073:2010 – BII1 Profiles and deliverables
- CEN CWA xxxx0: BII2 Architecture
- CEN CWA xxxx1, BII2 eNotification profile
- CEN CWA xxxx3, BII2 eCatalogue profiles
- CEN CWA xxxx4, BII2 Post Award profiles

BII2 web site: <http://www.cenbii.eu/>